

PATRICK STAPPERS ARCHITETTO

VILLA P

S|P_04

Cliente

Private

Luogo

Florence

Dimensioni

500 sqm.

Cronologia

2004 - 2006

Team

Arch. Claudio Nardi (project architect)

Status

built



While still working for a well-known Florentine architect I followed the renovation of a very particular villa on the outskirts of Florence. A large villa with the rear garden occupied by a one storey commercial building, all in very poor condition.

The project involved a substantial reorganization of the distribution scheme in order to connect the four units requested by the client, while trying to recover the beauty of the main villa by eliminating the annexes.

The first job as an independent freelance architect, assuming the project management. The villa on the street side was to be totally renovated, dividing it into two residential units. While the commercial shed at the back, which expanded into the neighbour's garden, was to be demolished completely to build a modern space for the clients sport car collection, with a full-glass loft on the first floor with large private terrace.





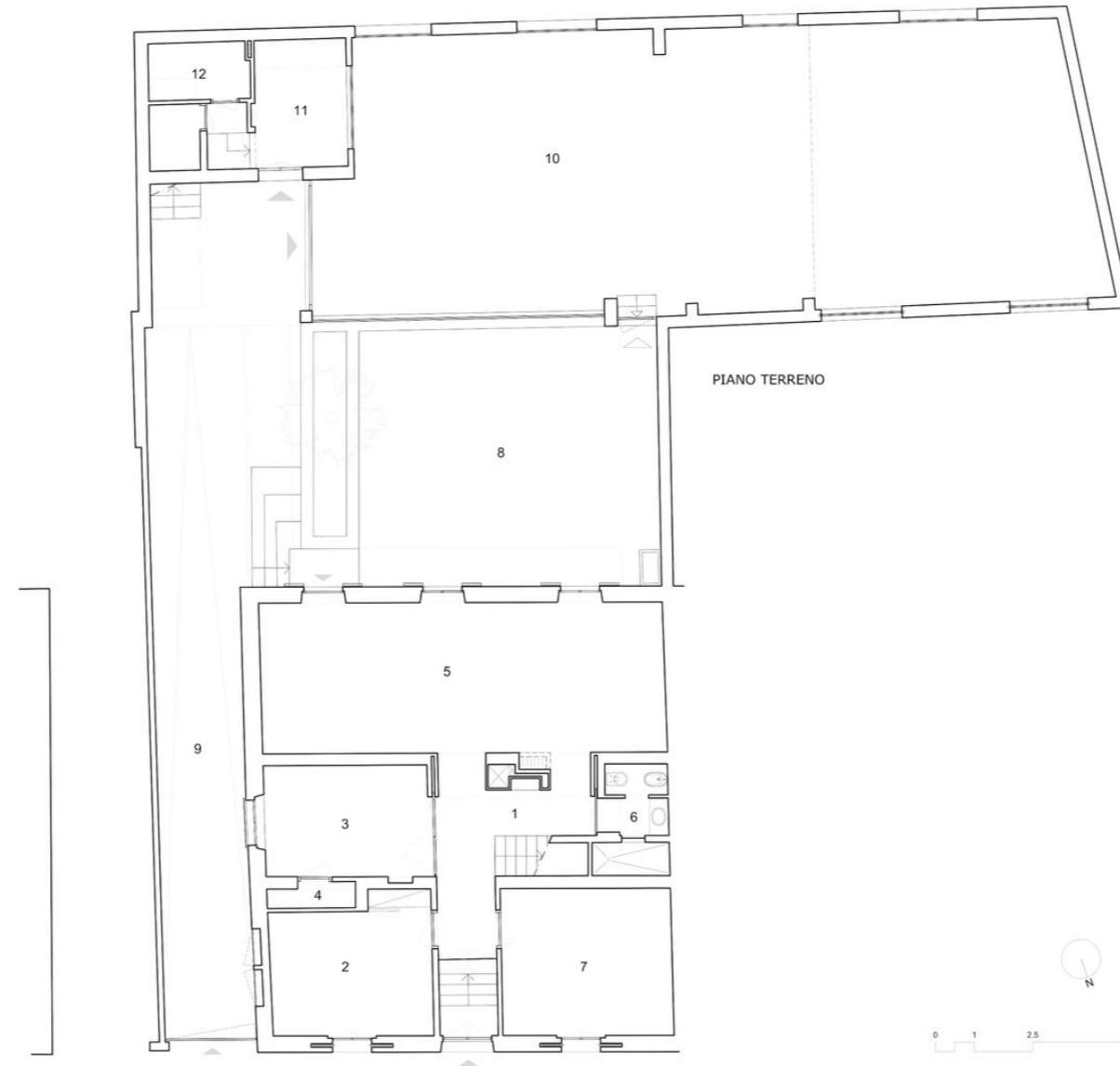




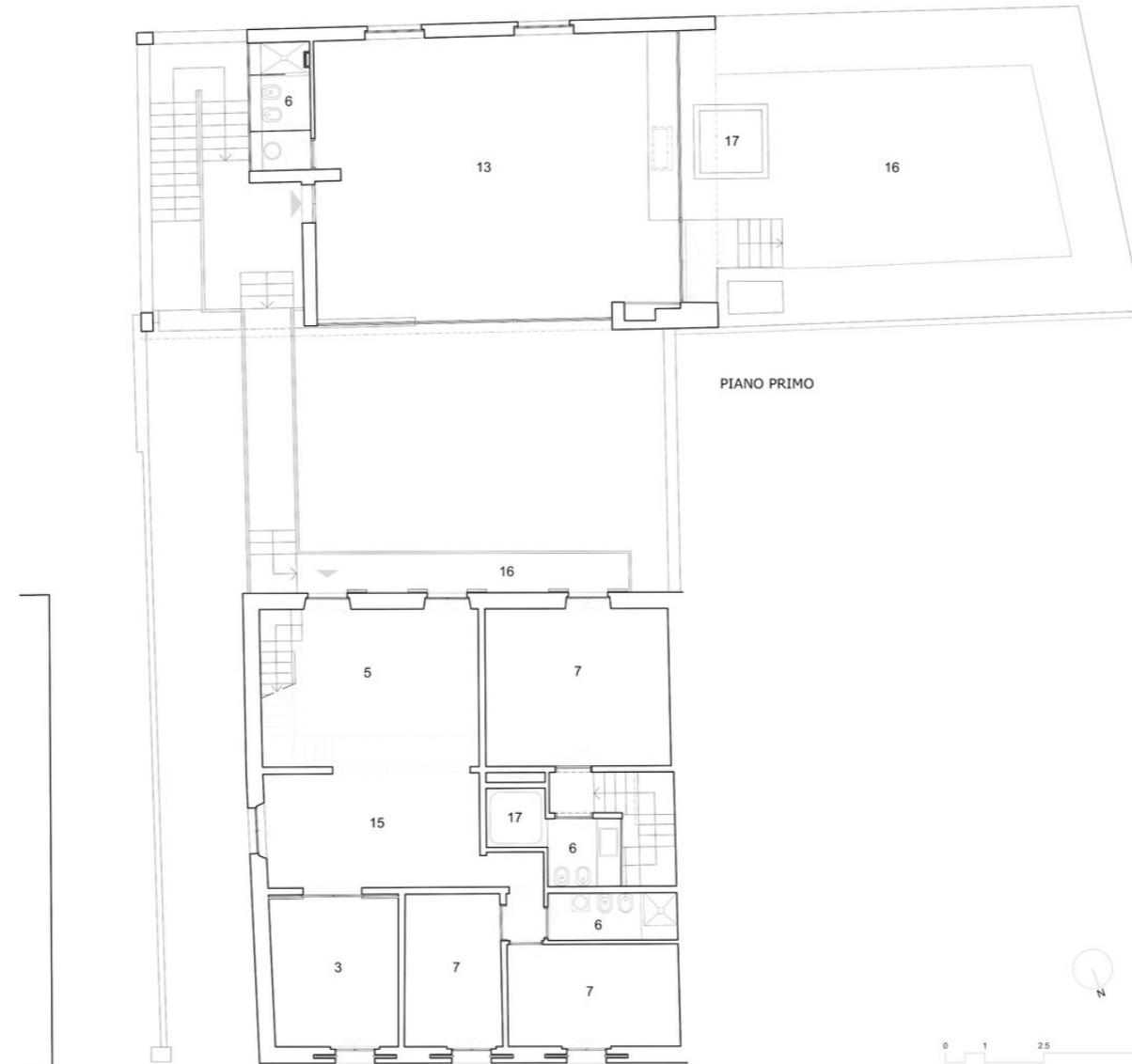




1. INGRESSO
2. STUDIO
3. CUCINA
4. DISPENSA
5. SOGGIORNO
6. BAGNO
7. CAMERA
8. GIARDINO
9. PASSAGGIO CARABILE
10. GARAGE
11. LAVANDERIA
12. RIPOSTIGLIO
13. MONOLOCALE
14. PASSARELLA
15. ZONA PRANZO
16. TERRAZZA
17. IDROMASSAGGIO
18. SOTTOTETTO
19. TERRAZZA A TASCA
20. COPERTURA



1. INGRESSO
2. STUDIO
3. CUCINA
4. DISPENSA
5. SOGGIORNO
6. BAGNO
7. CAMERA
8. GIARDINO
9. PASSAGGIO CARABILE
10. GARAGE
11. LAVANDERIA
12. RIPOSTIGLIO
13. MONOLOCALE
14. PASSARELLA
15. ZONA PRANZO
16. TERRAZZA
17. IDROMASSAGGIO
18. SOTTOTETTO
19. TERRAZZA A TASCA
20. COPERTURA



1. INGRESSO
2. STUDIO
3. CUCINA
4. DISPENSA
5. SOGGIORNO
6. BAGNO
7. CAMERA
8. GIARDINO
9. PASSAGGIO CARABILE
10. GARAGE
11. LAVANDERIA
12. RIPOSTIGLIO
13. MONOLOCALE
14. PASSARELLA
15. ZONA PRANZO
16. TERRAZZA
17. IDROMASSAGGIO
18. SOTTOTETTO
19. TERRAZZA A TASCA
20. COPERTURA







WWW.PATRICKSTAPPERS.COM