

PATRICK STAPPERS ARCHITETTO

GD VILLA

GD_15

Cliente

Private

Luogo

Florence

Cronologia

2015 - 2018

Team

Arch. Rossano Morandini (lead architect)

Status

rough works



On the hills just above Ponte Vecchio resides a beautiful villa with a large private park and a breathtaking view of Florence. A very articulated complex that develops along the slope, starting very low from the street level and ending at the top with a prominent tower. A labyrinth of long rooms and stairs leads to a first noble environment, a beautiful veranda with a large terrace. From there an external path leads to the main villa overlooking Florence.

When a colleague was asked by the new owner to follow the substantial renovation work, he asked the studio to be part of the team with the task of following the architectural design.

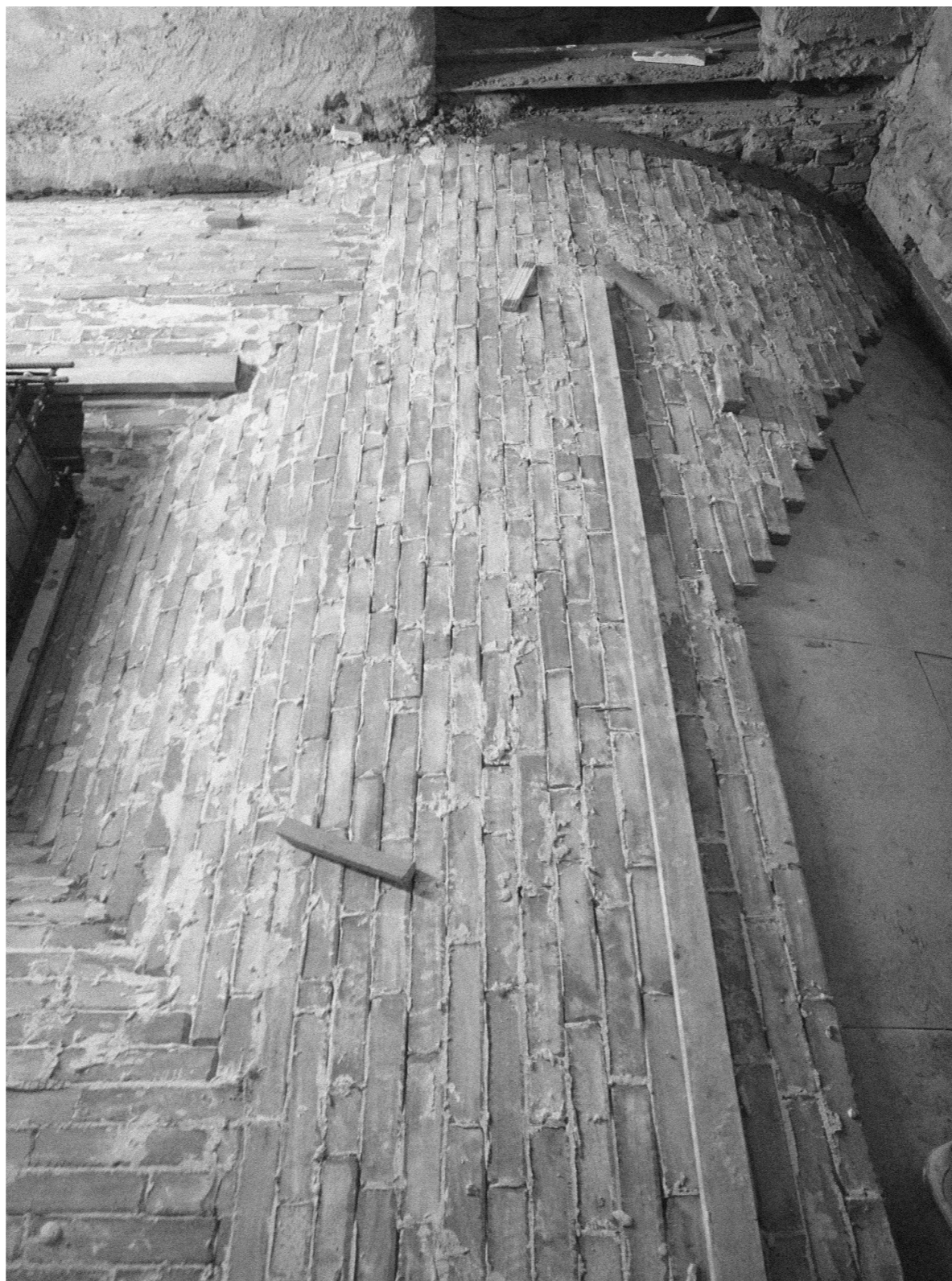
The villa was in a very bad state and the work started with a general arrangement, eliminating the non-original parts added over the years, handling the fragile structures with extreme care.

The challenge that had been posed from the beginning was the request to insert an elevator, maintaining large comfortable spaces for each member of the large family. While the works progressed, as the complex was reborn, the requests of the client also changed. A continuous design in full respect of the characteristics of the villa, always keeping in mind a refined final work of luxury.

A similar path follows the style of the interiors. After a departure in the sign of classic style, from the layout to the choice of finishes and furnishings, the project steered towards an increasingly modern interpretation of the classic. Foreseeing at last the use of material materials such as aged finishes almost "rediscovered" combined with a modern language with eclectic objects and effect lighting.

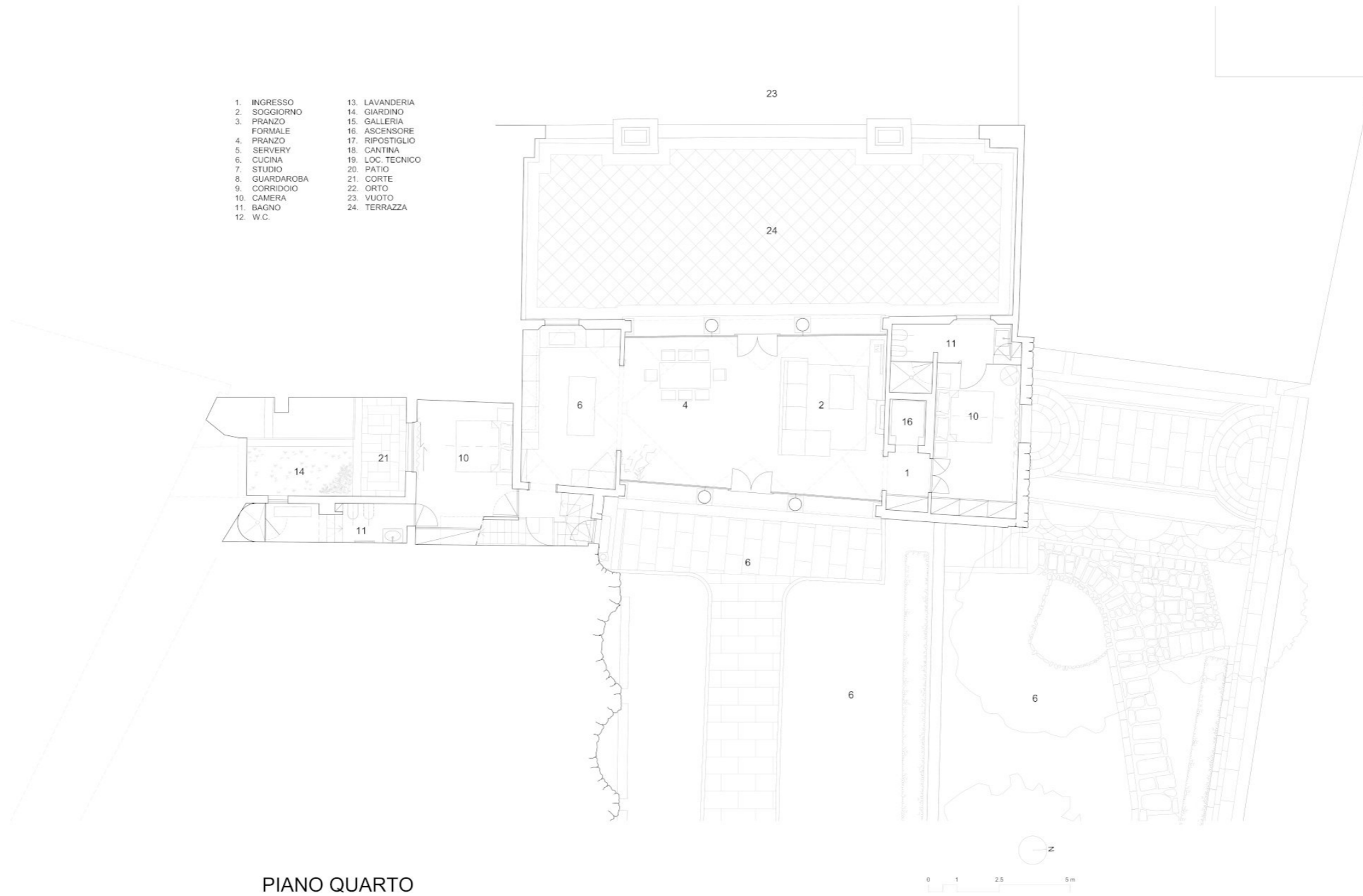
Once finished the rough-built building stage the property changed owner.



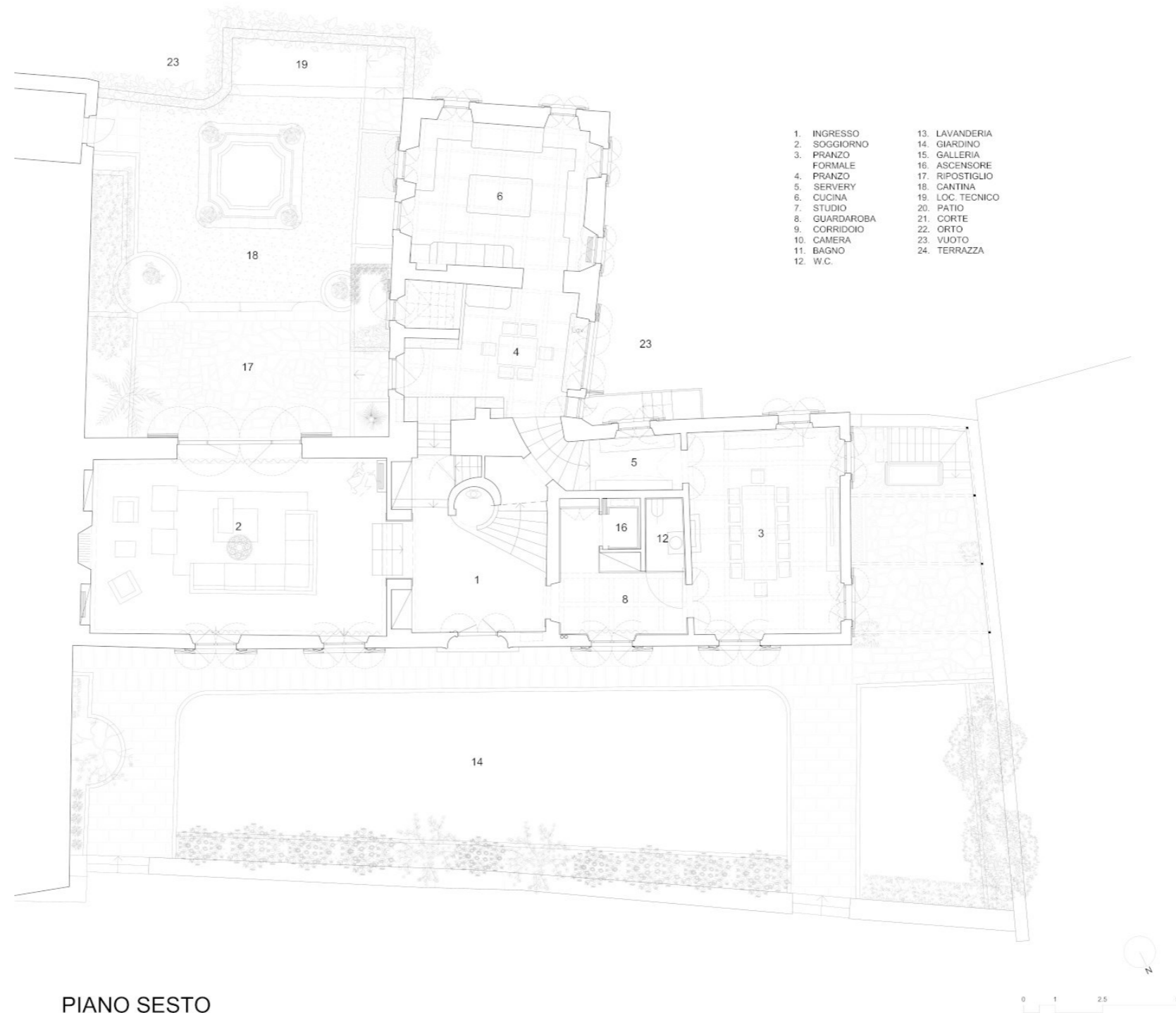


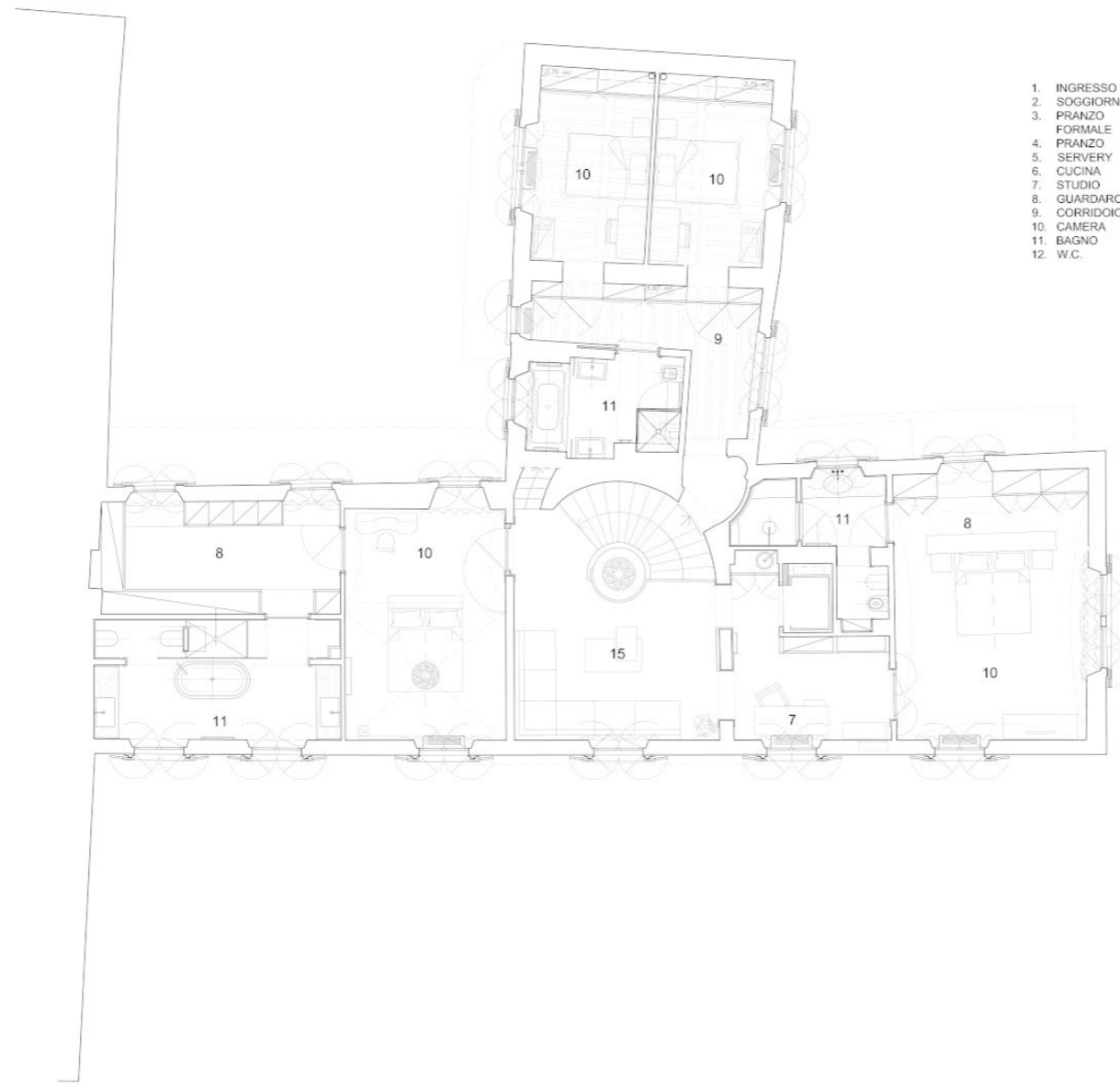


- | | |
|-----------------------|------------------|
| 1. INGRESSO | 13. LAVANDERIA |
| 2. SOGGIORNO | 14. GIARDINO |
| 3. PRANZO
FORMALE | 15. GALLERIA |
| 4. PRANZO
SERVIZIO | 16. ASCENSORE |
| 5. CUCINA | 17. RIPOSTIGLIO |
| 6. STUDIO | 18. CANTINA |
| 7. GUARDAROBA | 19. LOC. TECNICO |
| 8. CORRIDOIO | 20. PATIO |
| 9. CAMERA | 21. CORTE |
| 10. BAGNO | 22. ORTO |
| 11. W.C. | 23. VUOTO |
| | 24. TERRAZZA |



PIANO QUARTO





- | | |
|----------------------|------------------|
| 1. INGRESSO | 13. LAVANDERIA |
| 2. SOGGIORNO | 14. GIARDINO |
| 3. PRANZO
FORMALE | 15. GALLERIA |
| 4. PRANZO | 16. ASCENSORE |
| 5. SERVERY | 17. RIPOSTIGLIO |
| 6. CUCINA | 18. CANTINA |
| 7. STUDIO | 19. LOC. TECNICO |
| 8. GUARDAROBA | 20. PATIO |
| 9. CORRIDOIO | 21. CORTE |
| 10. CAMERA | 22. ORTO |
| 11. BAGNO | 23. VUOTO |
| 12. W.C. | 24. TERRAZZA |

PIANO SETTIMO







WWW.PATRICKSTAPPERS.COM