

PATRICK STAPPERS ARCHITETTO

CB APARTMENT

CB_17

Cliente

Private

Luogo

Florence

Dimensioni

145 sqm.

Cronologia

2017

Team

Arch. Claudia Cagnetta (in collaboration)

Status

built



A large apartment on the ground floor of a condominium building with a large surrounding garden. Near the banks of the Arno river, in a landscape protected area, to be renovated completely.

The additional value of the house is the presence of the garden on two sides, strongly penalized by the difference in level between the house and the garden. During the design of the project focus was put on reorganizing the plan to create a large bright and liveable living area, as well as improving the connection with the garden. A new outdoor flooring connected, through an extensive staircase that runs along the entire apartment, to the living room, dining room and kitchen. Large sliding windows that open onto the terrace overlooking the beautiful south-facing garden. The garden has been made accessible by an automatic gate on the street side so that it becomes the second entrance.

The formal entrance and hallway house numerous bookshelves, custom-made by the owners family business.









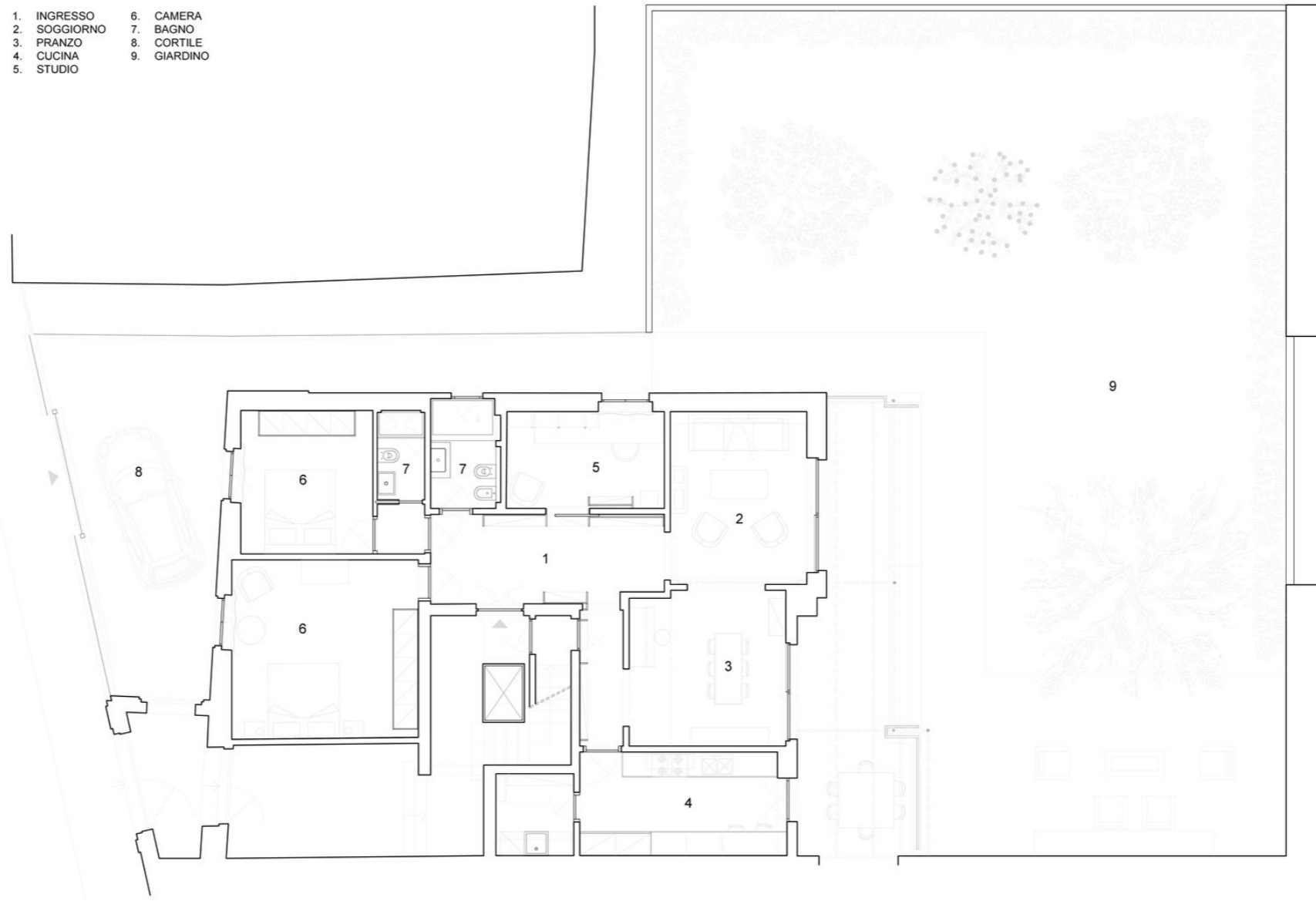








- | | |
|--------------|-------------|
| 1. INGRESSO | 6. CAMERA |
| 2. SOGGIORNO | 7. BAGNO |
| 3. PRANZO | 8. CORTILE |
| 4. CUCINA | 9. GIARDINO |
| 5. STUDIO | |



WWW.PATRICKSTAPPERS.COM