

PATRICK STAPPERS ARCHITETTO

HEDGE FUND OFFICE

CID_05_2

Cliente

Private

Luogo

Florence

Dimensioni

140 sqm.

Cronologia

2005 - 2008

Status

built



The satellite office for a major hedge fund operator. A beautiful environment for receiving clients and perform fast market operations.

To enhance the beauty, the project focuses on two aspects, the vertical connection and the emphasizing of the two central columns which bear the cross vaults.

The intervention involves the insertion of a central void to obtain an open view. Enlarged by a cantilevered scenic staircase that allows you to admire the entire space.

The glass handrail leaves the space free. A walnut floor with lime putty walls and a limestone floor on ground level that also covers the bathroom.

The lighting of this environment has been carefully studied between the choice of spotlights, furnishing lamps and designing of custom-made lamps.







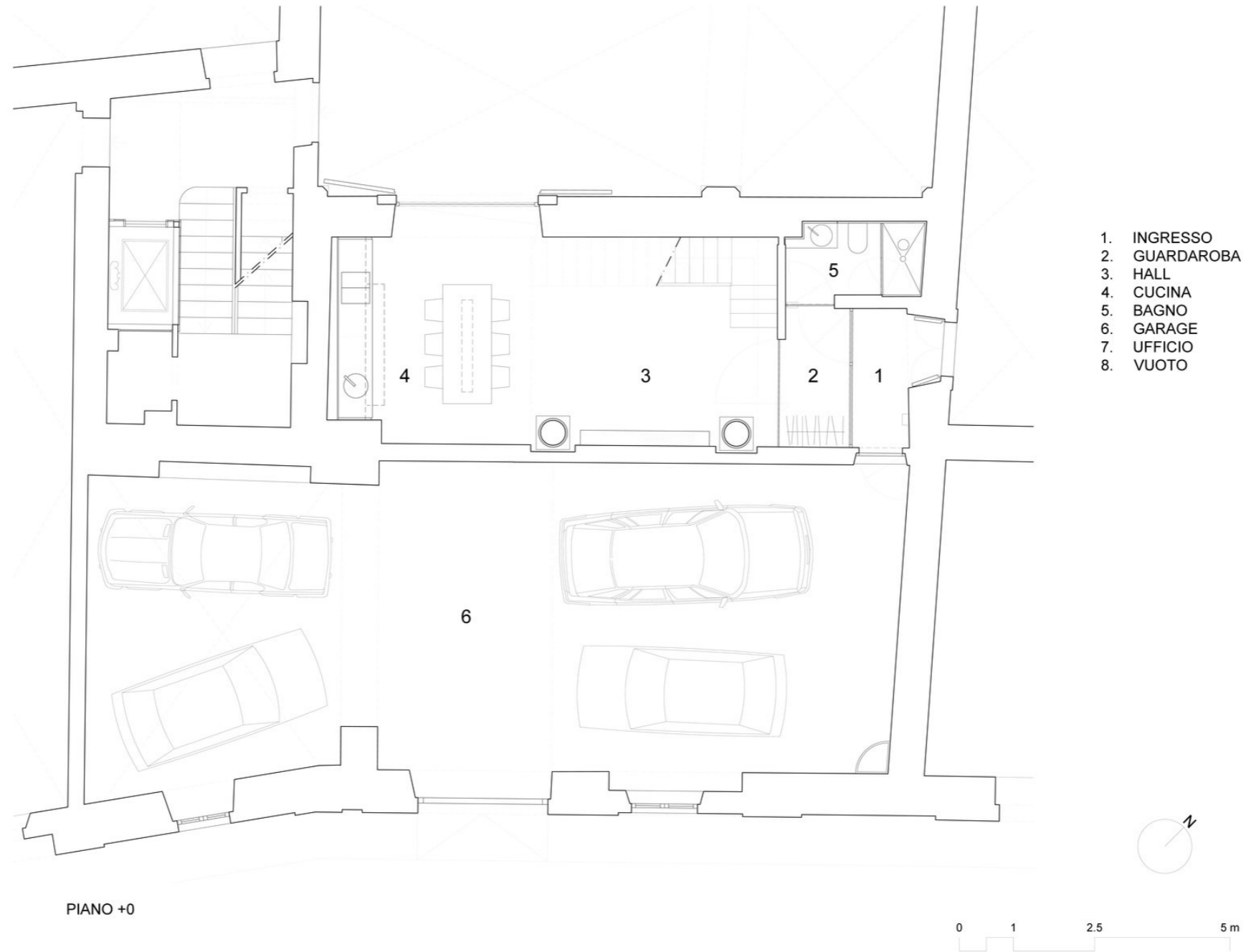








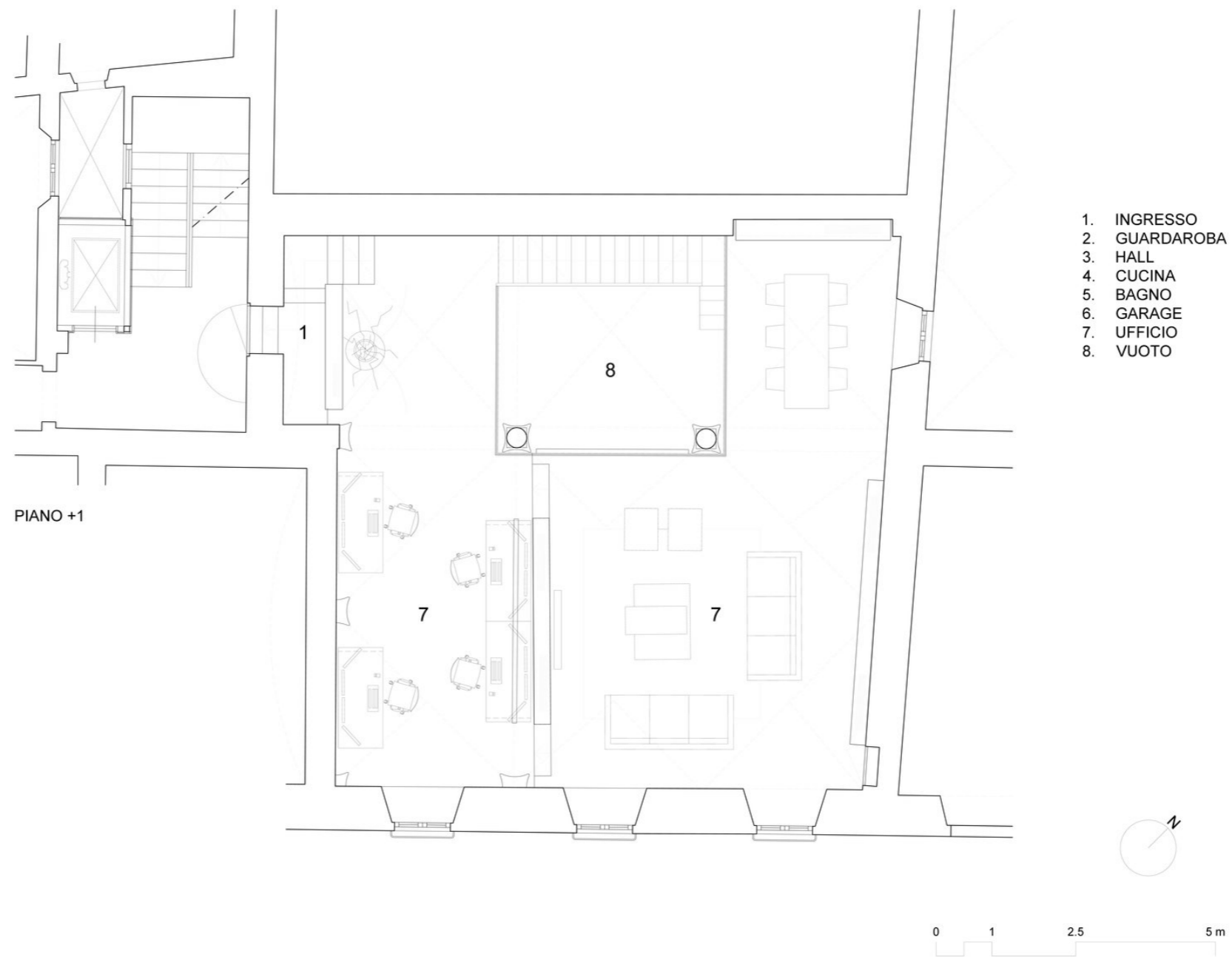


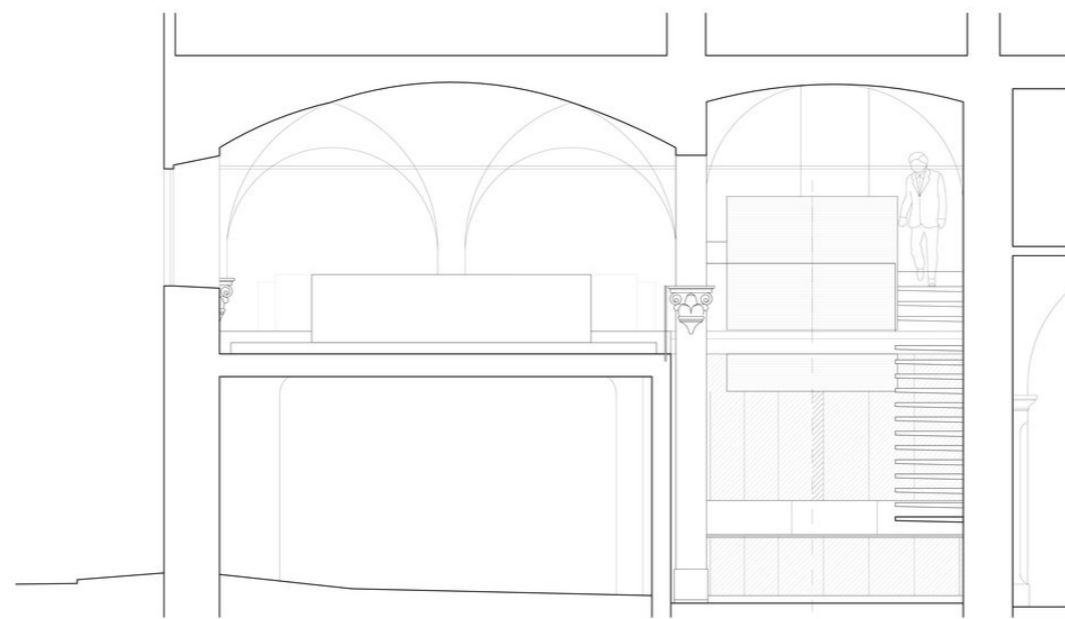


- 1. INGRESSO
- 2. GUARDAROBA
- 3. HALL
- 4. CUCINA
- 5. BAGNO
- 6. GARAGE
- 7. UFFICIO
- 8. VUOTO

PIANO +0

0 1 2.5 5 m





SEZIONE





WWW.PATRICKSTAPPERS.COM