

PATRICK STAPPERS ARCHITETTO

PALAZZO DEL SONNO

VSL_13

Luogo

Florence

Dimensioni

27.300 sqm.

Cronologia

2013

Team

Arch. Rossano Morandini (lead architect)

Status

idea



In view of the imminent sale of the Palazzo del Sonno in Viale Spartaco Lavagnini, the studio was contacted by fellow architects to elaborate a concept design to be demonstrated to future buyers as a possible development of the property.

20,000 sq m. functional space in a strategic position in the city of Florence, an important opportunity with a great impact. The design starts without a definite destination, even though there were rumours about a hotel or perhaps a shopping center. The layout therefore had to be as adaptable as possible.

The project focused on the recovery of the courtyards. By demolishing the central part, a single courtyard is created, which can be used as a distribution space for the entire block. The addition of a large transparent cover recovers this beautiful space as a large atrium. A large cloud that rests on the roofs of Florence. A light structure in glazed steel to make the most of natural lighting, composed of a wavy surface designed in different ways.

While the original facade on Viale Spartaco Lavagnini has its own very rhythmic development, the side on Via Lorenzo Magnifico has an evident superfetation. The concept proposes the demolition of this part of the facade in order to have the possibility of giving a strong architectural imprint to the new complex. In order to design a sort of business card for this important injection into the Florentine urban layout. In order to give voice to the new complex.

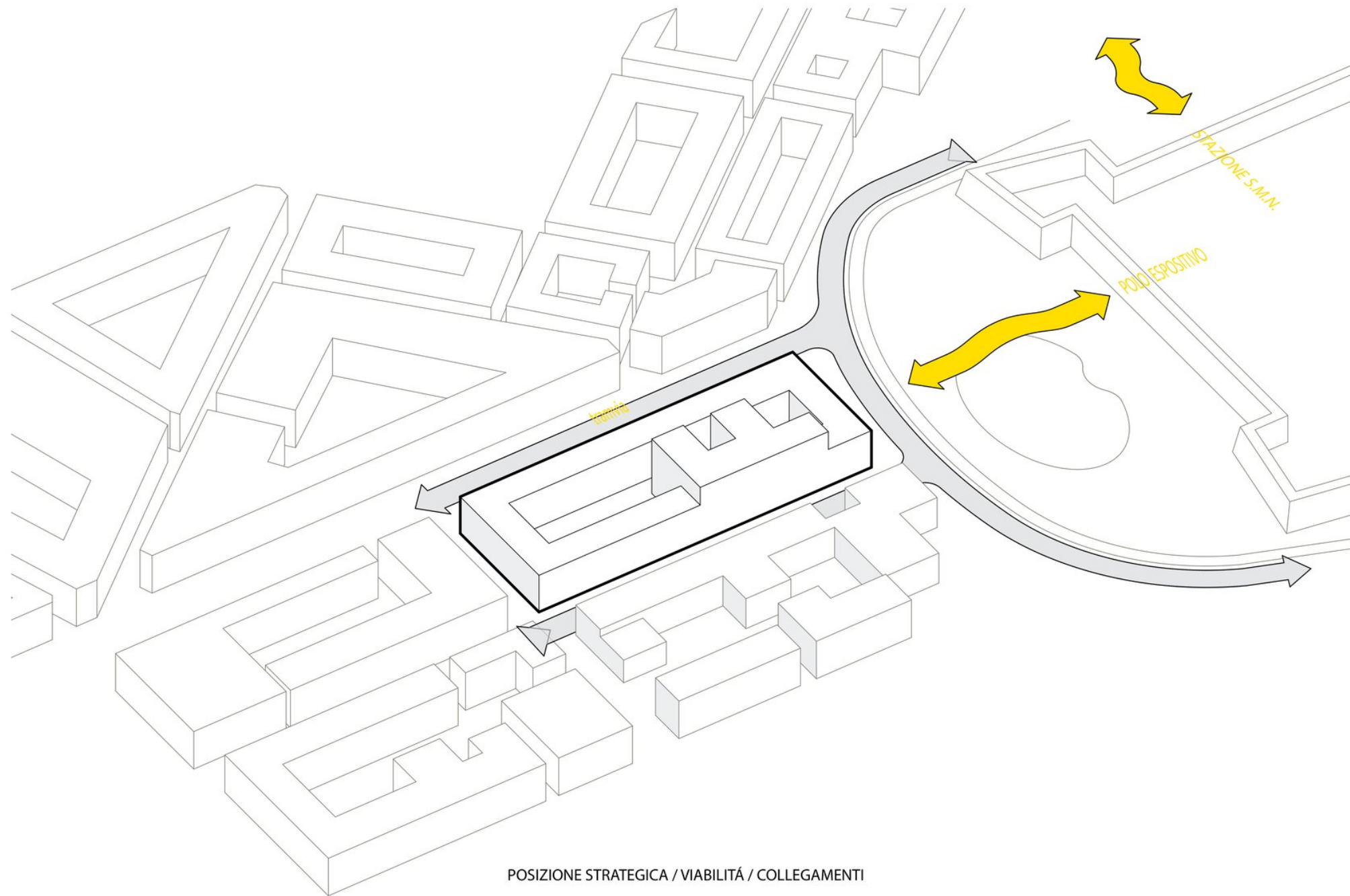
The internal facade of the hotel on the Via Lorenzo Magnifico side is covered by a huge green wall. A natural filter between the eventual hotel and the future surrounding functions probably destined for a shopping center. To relate the new glass facade of the commercial / office building to the surrounding buildings, a drawing of a classic facade with a typical decoration and cadence is printed on it.

The basement area houses large garages and a wellness area serving the hotel.

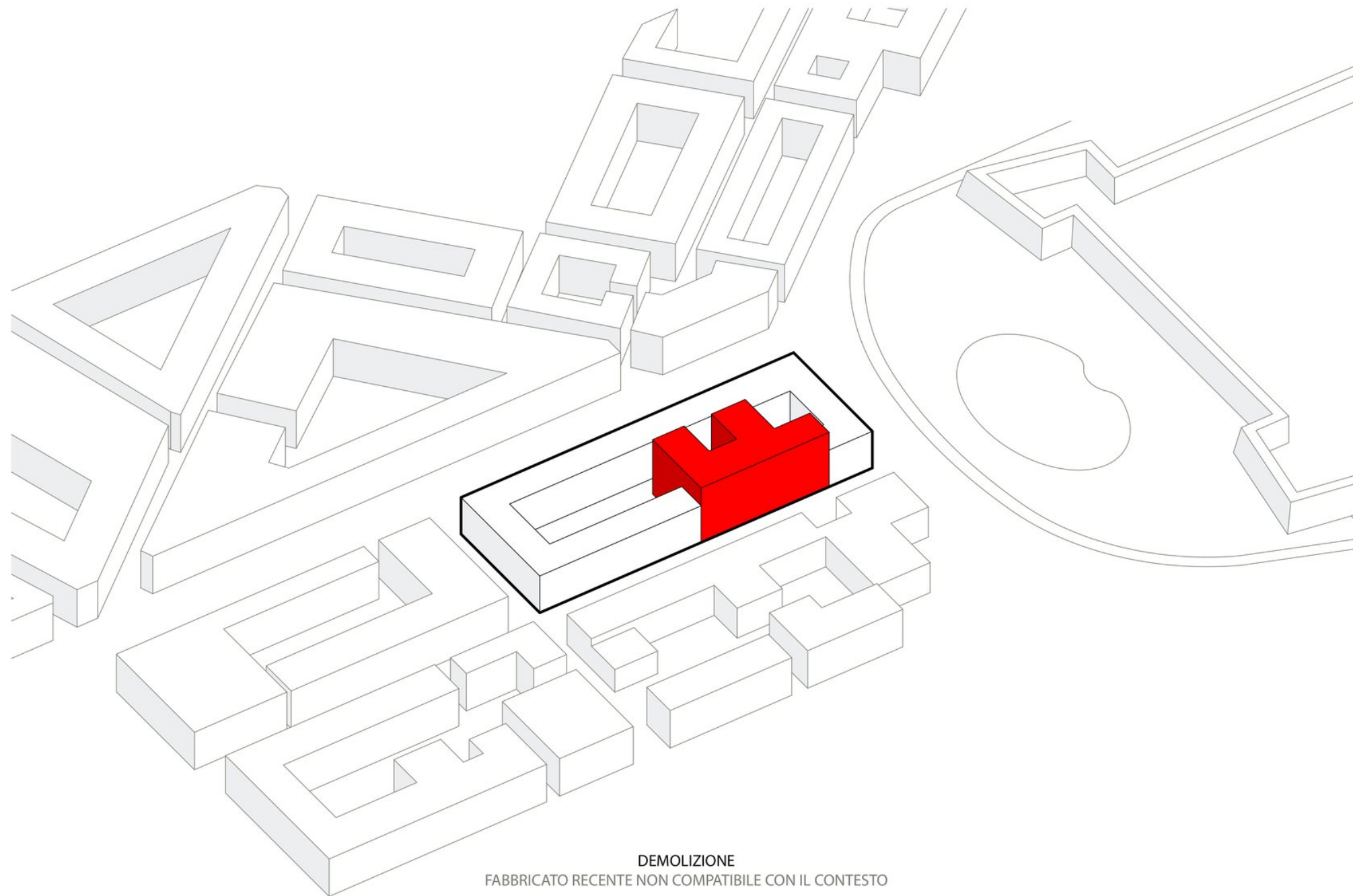


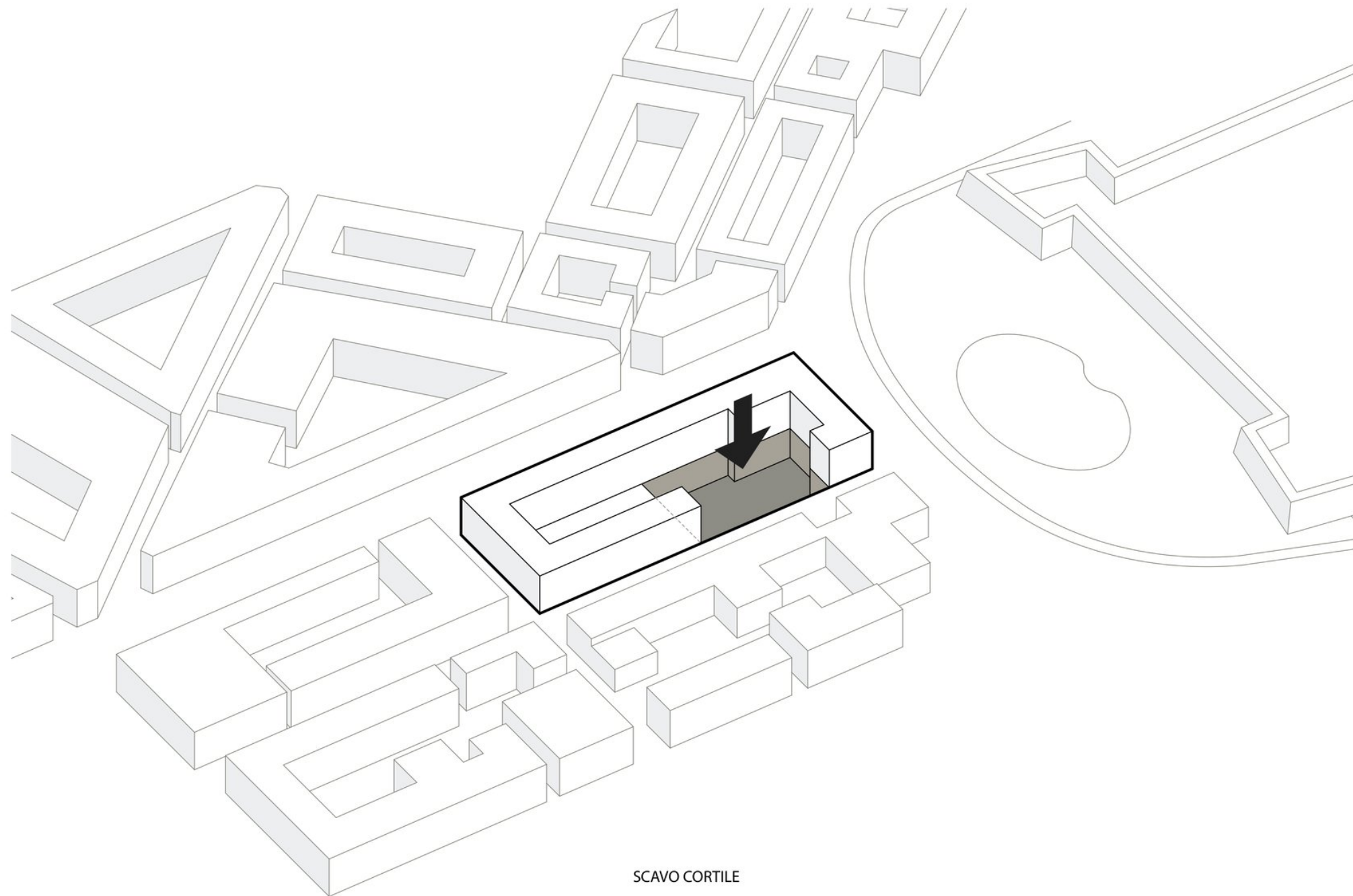


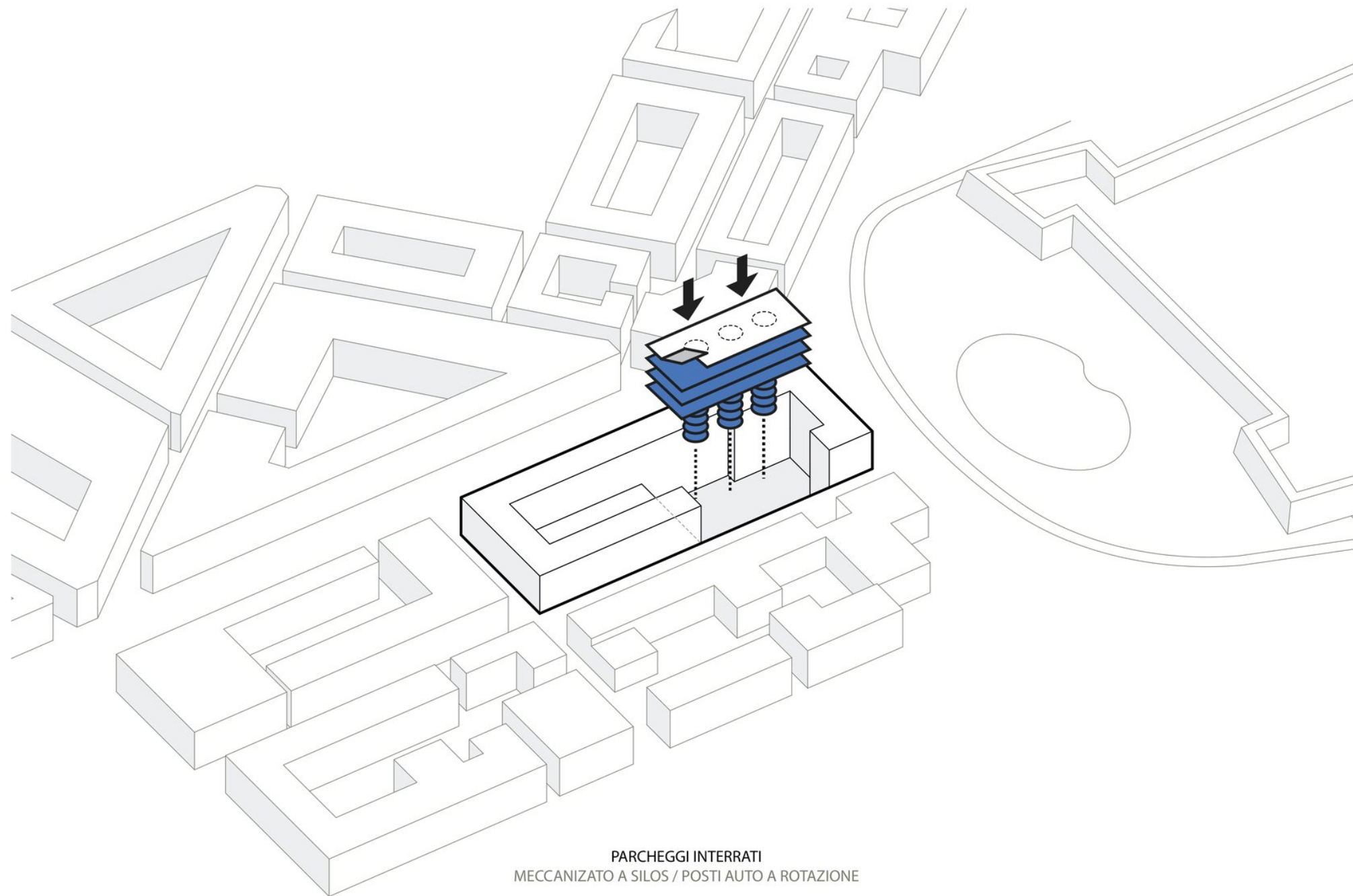




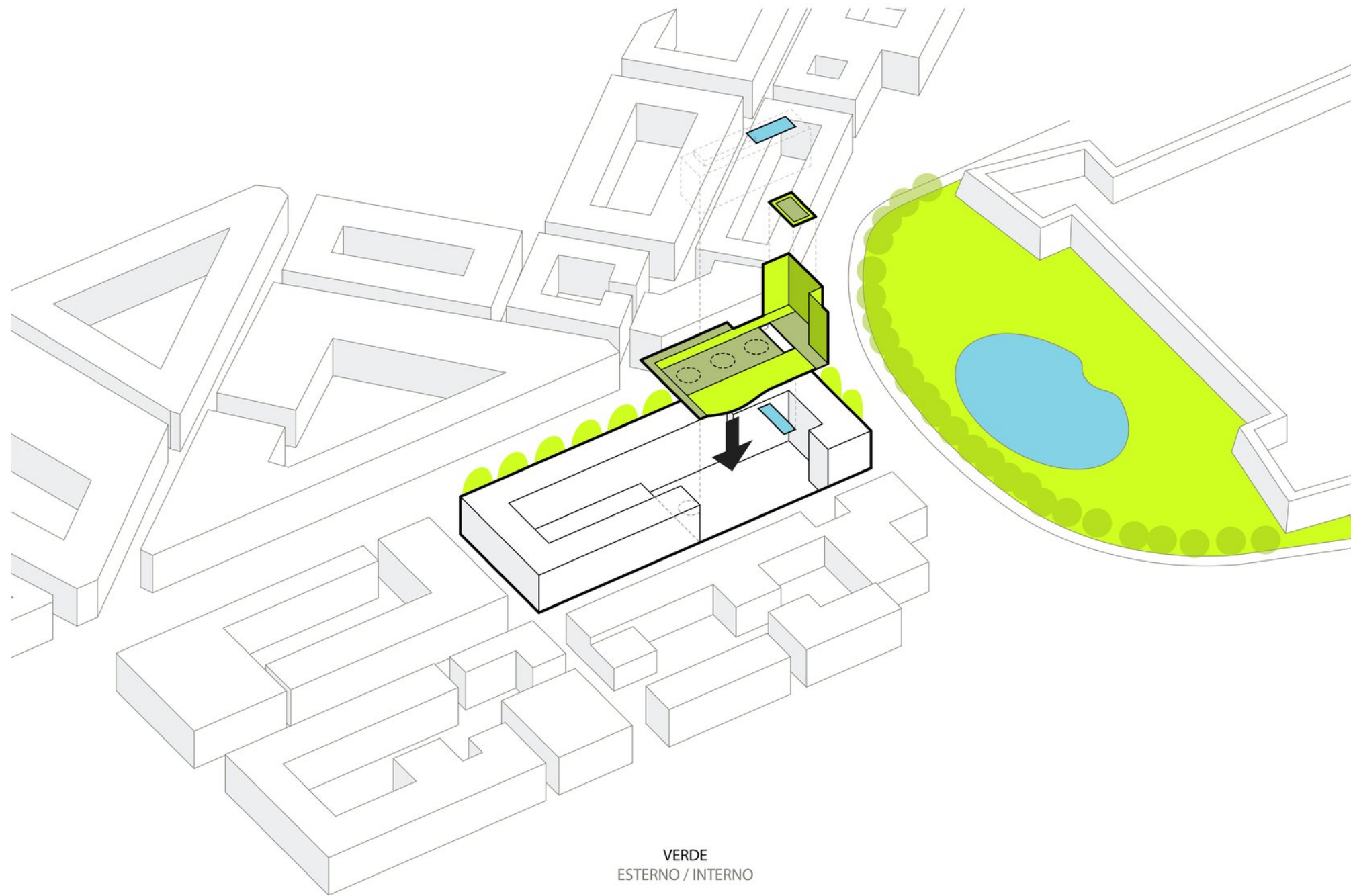
POSIZIONE STRATEGICA / VIABILITÀ / COLLEGAMENTI

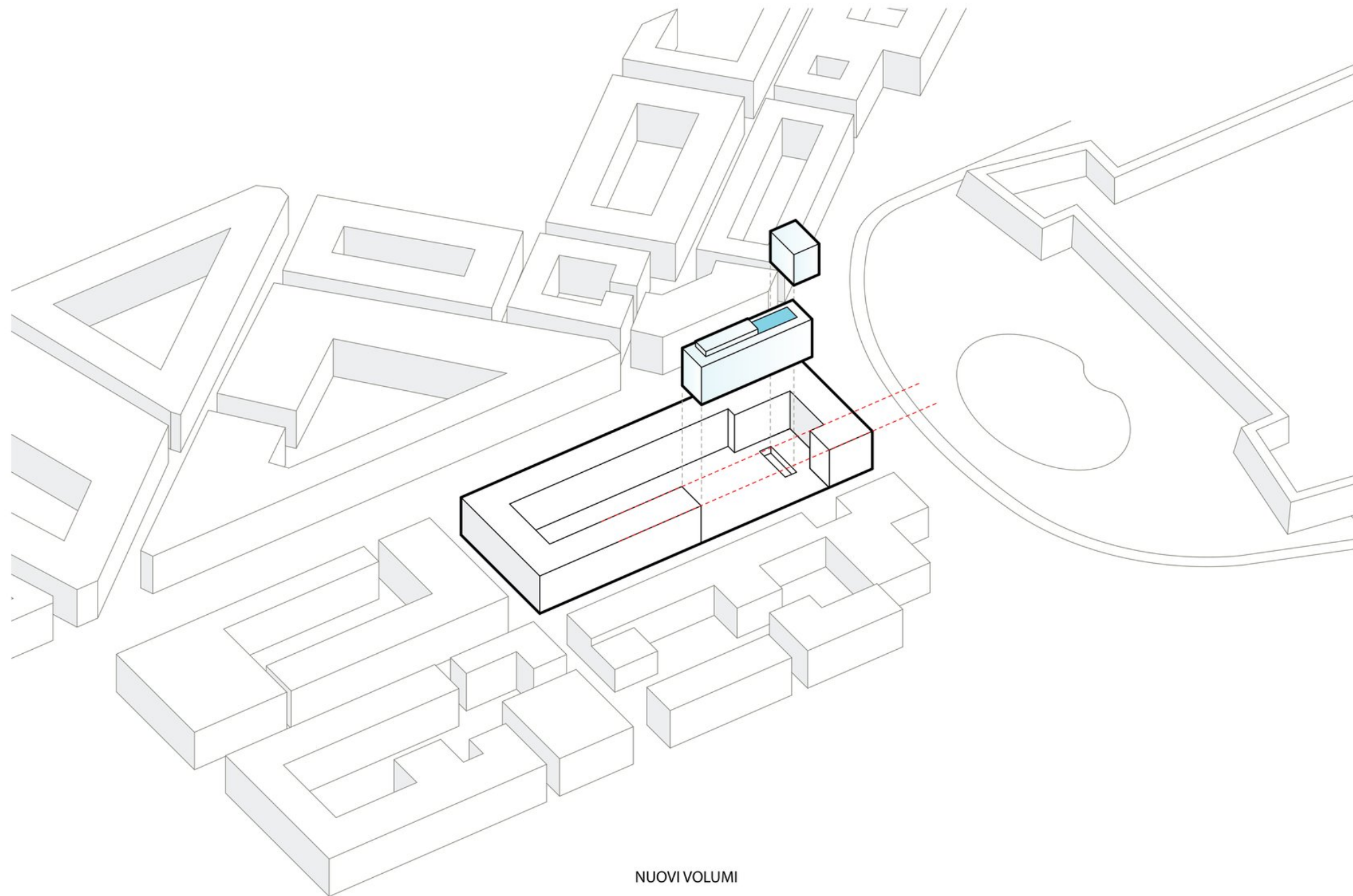




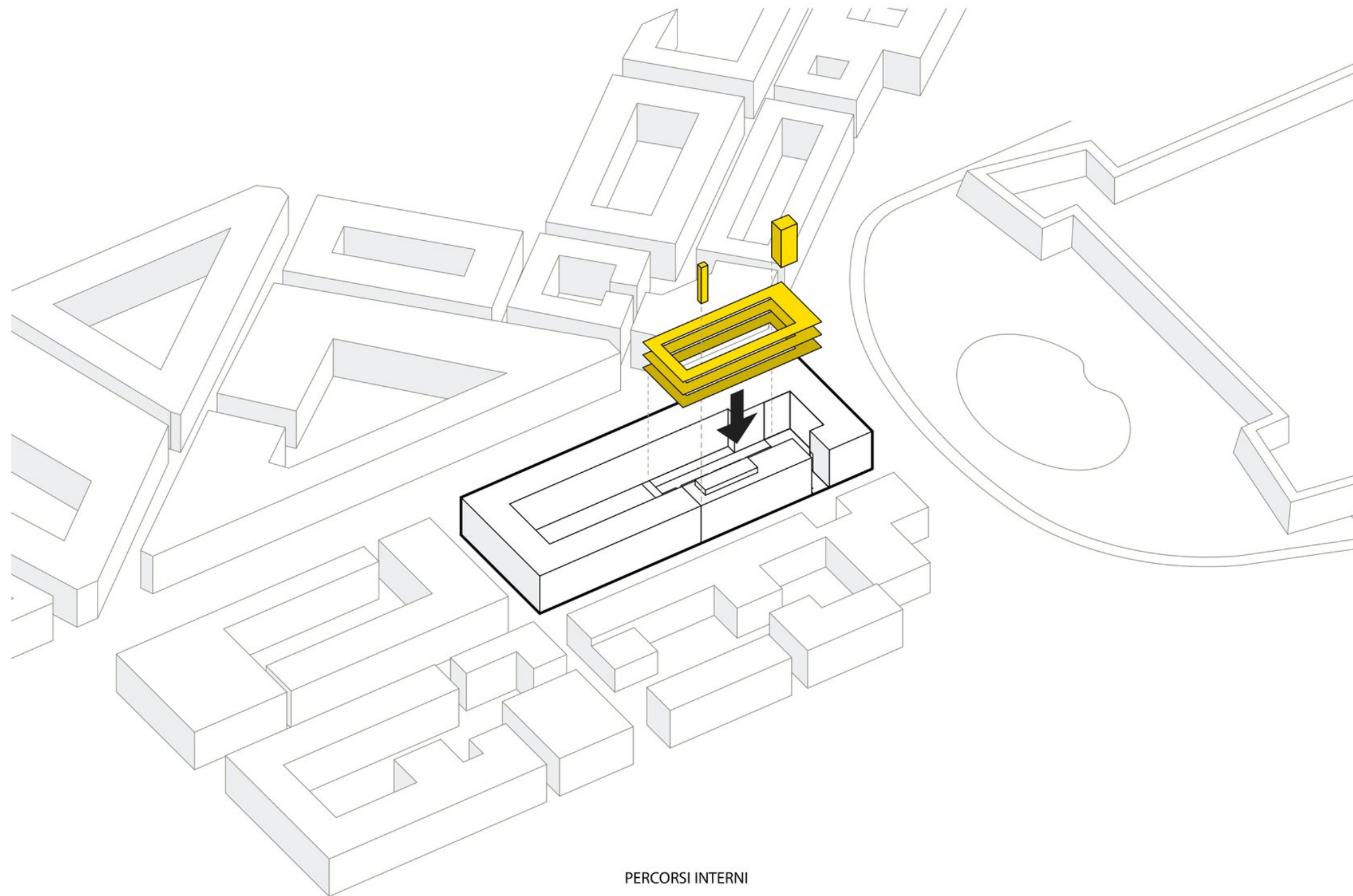


PARCHEGGI INTERRATI
MECCANIZATO A SILOS / POSTI AUTO A ROTAZIONE

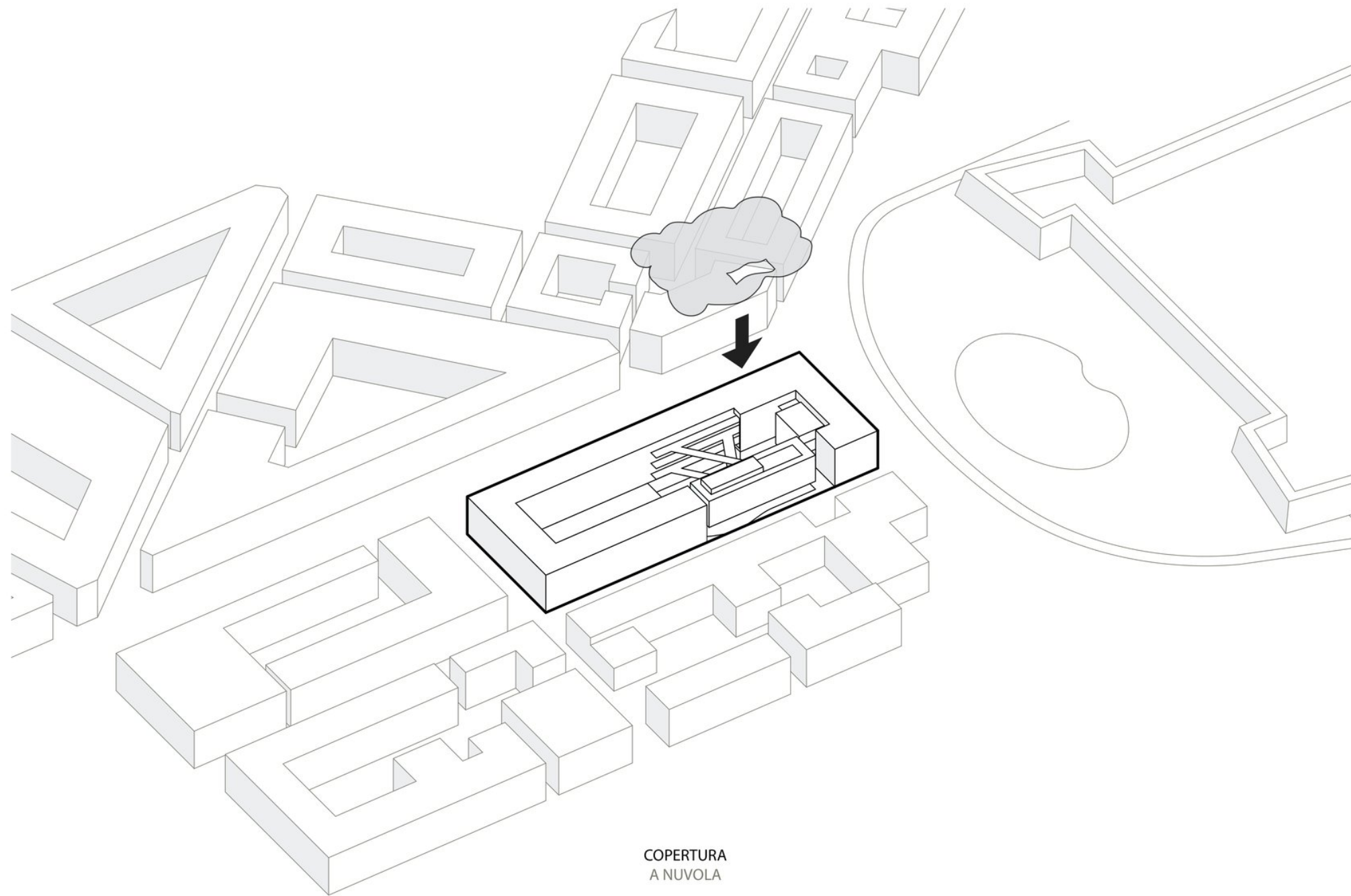




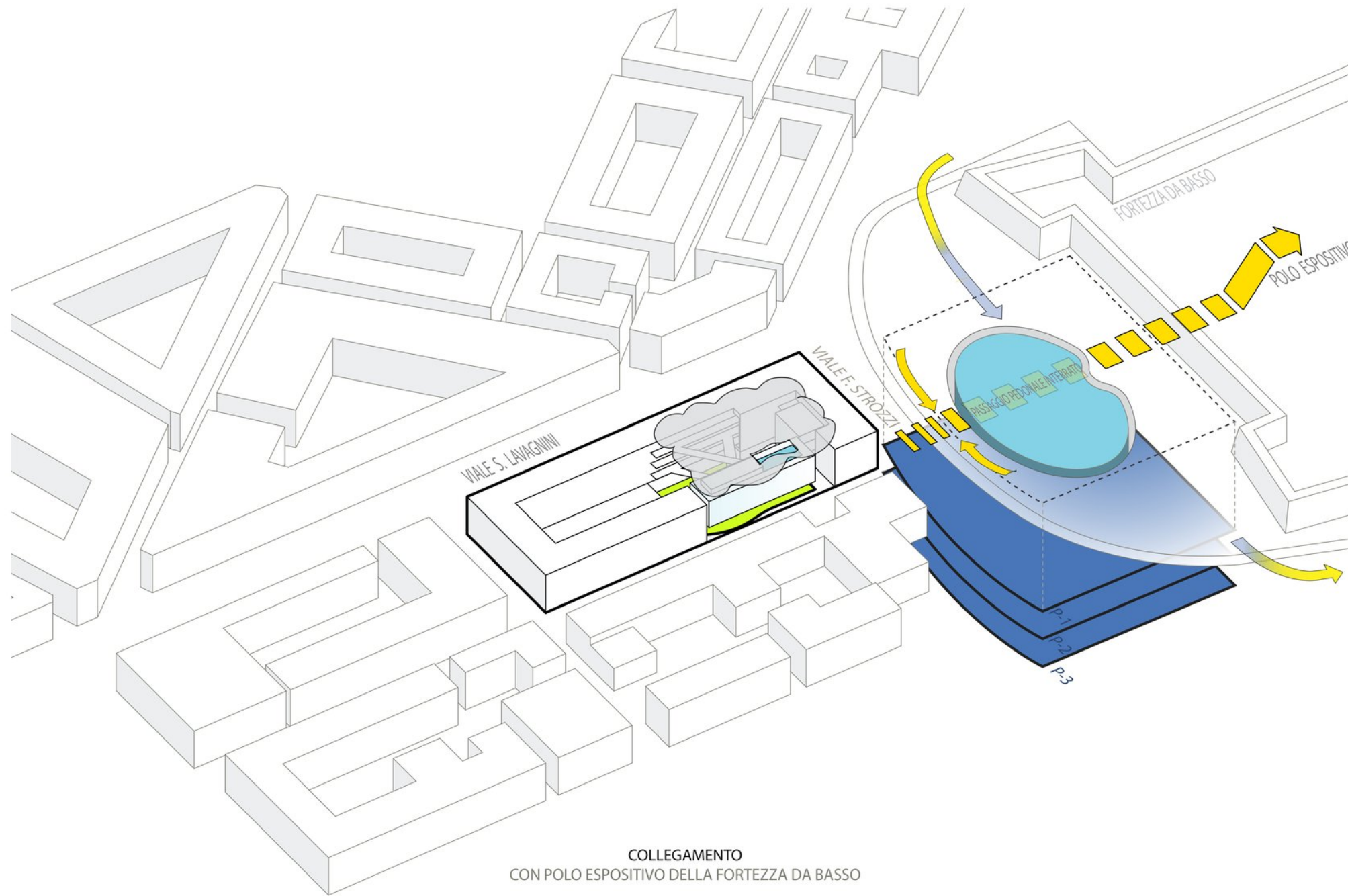
NUOVI VOLUMI

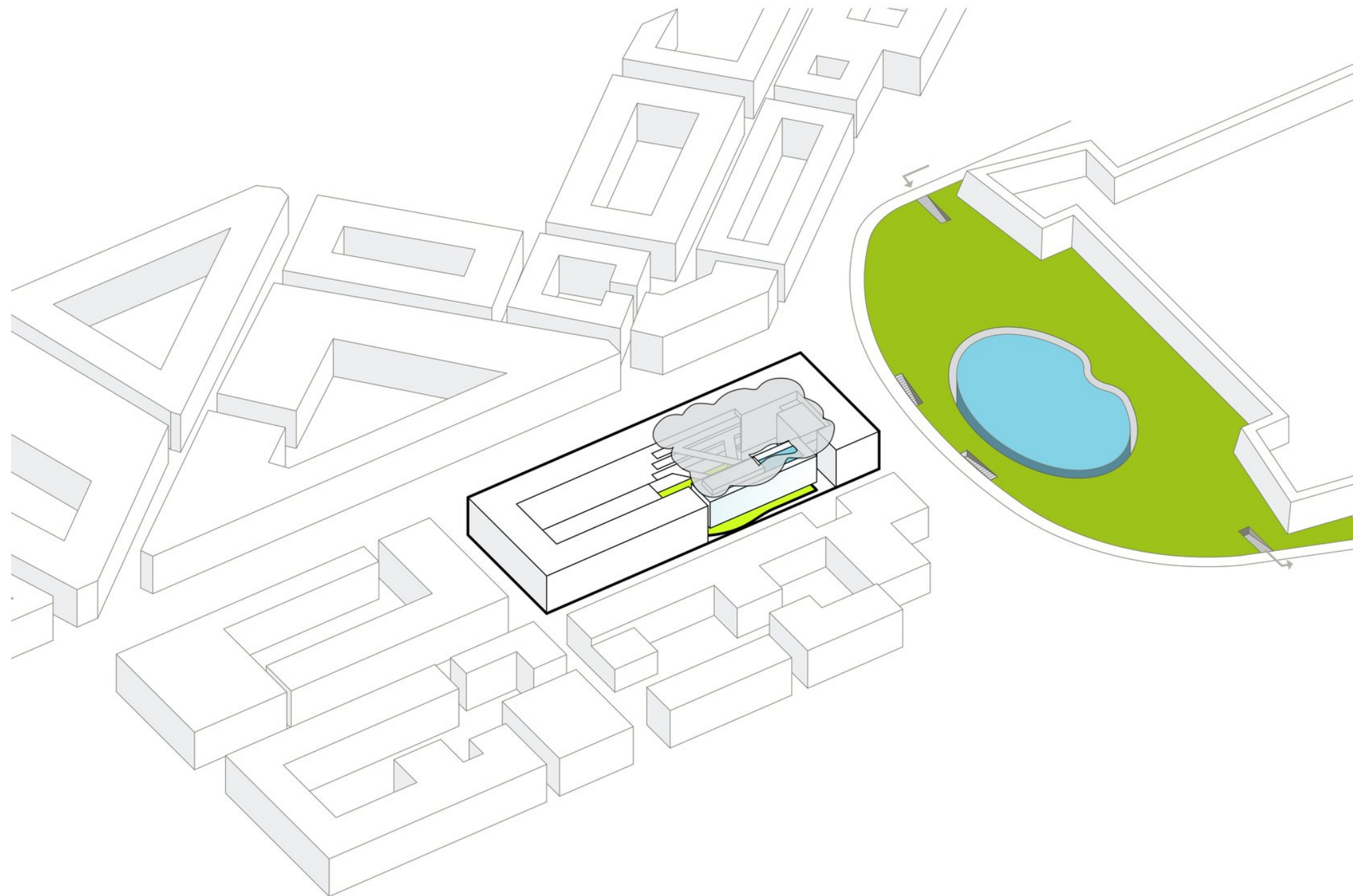


PERCORSI INTERNI



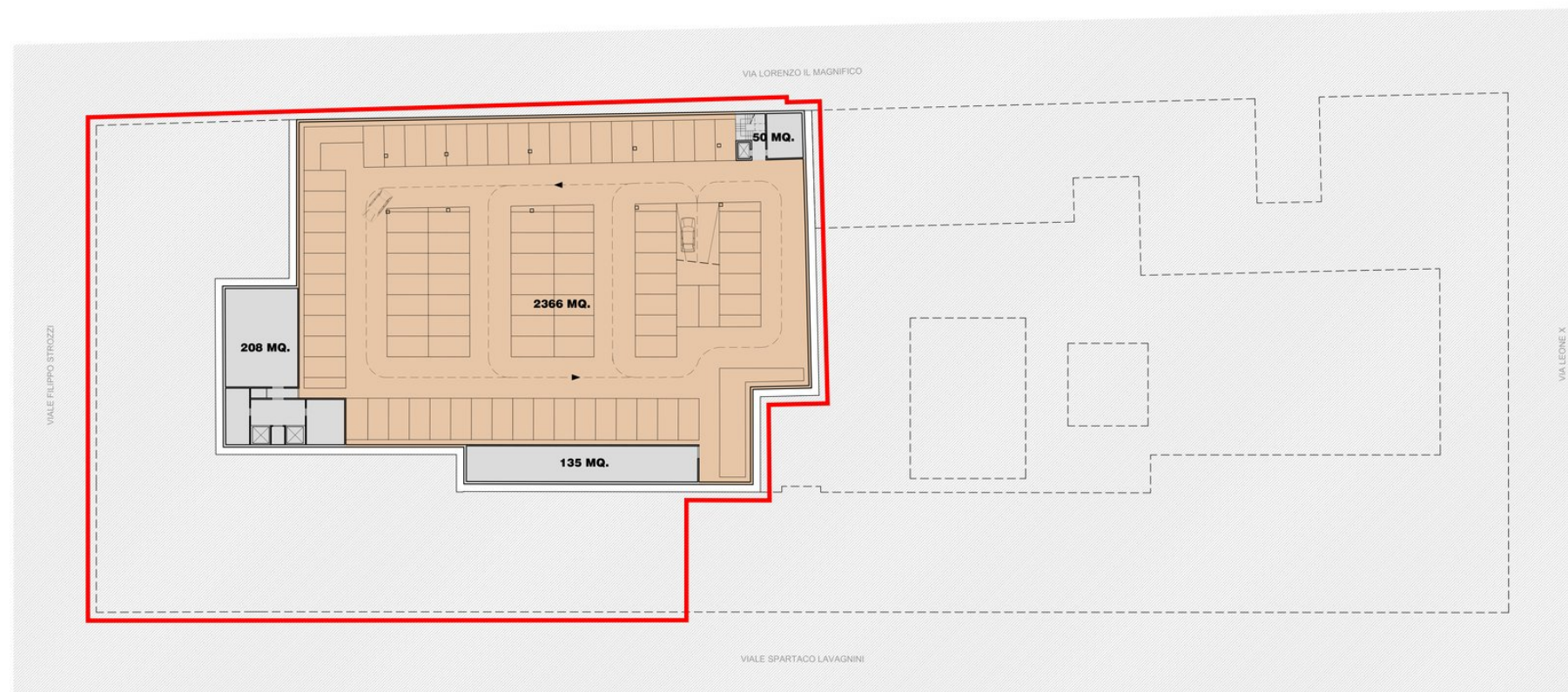
COPERTURA
A NUVOLA





LEGENDA

ALBERGO con retail	8095 MQ.	COLLEGAMENTI / SPAZI TECNICI	2522 MQ.
COMMERCIALE media struttura	1969 MQ.	PARCHEGGI	5836 MQ.
COMMERCIALE del vicinato	1161 MQ.	TERRAZZE	436 MQ.
RESIDENZIALE	1381 MQ.	PISCINA	173 MQ.
DIREZIONALE	3943 MQ.	TOTALE SUPERFICIE	27331 MQ.
RESEDE CONDOMINIALE	1815 MQ.		
LOTTO			



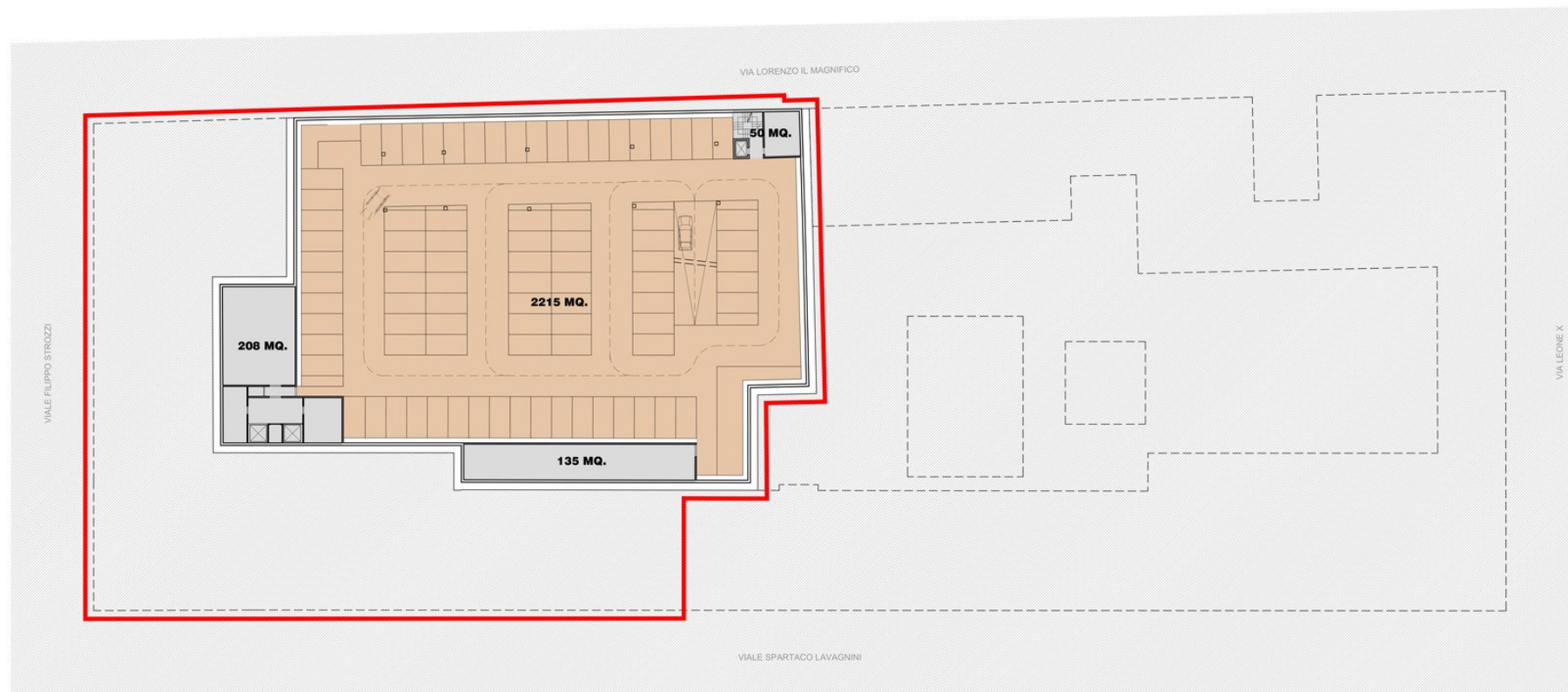
PROGETTO DI MASSIMA DELLE FUNZIONI

-3 Piano Interrato



LEGENDA

ALBERGO con retail	8095 MQ.	COLLEGAMENTI / SPAZI TECNICI	2522 MQ.
COMMERCIALE media struttura	1969 MQ.	PARCHEGGI	5836 MQ.
COMMERCIALE del vicinato	1161 MQ.	TERRAZZE	436 MQ.
RESIDENZIALE	1381 MQ.	PISCINA	173 MQ.
DIREZIONALE	3943 MQ.	TOTALE SUPERFICIE	27331 MQ.
RESEDE CONDOMINIALE	1815 MQ.		
LOTTO			

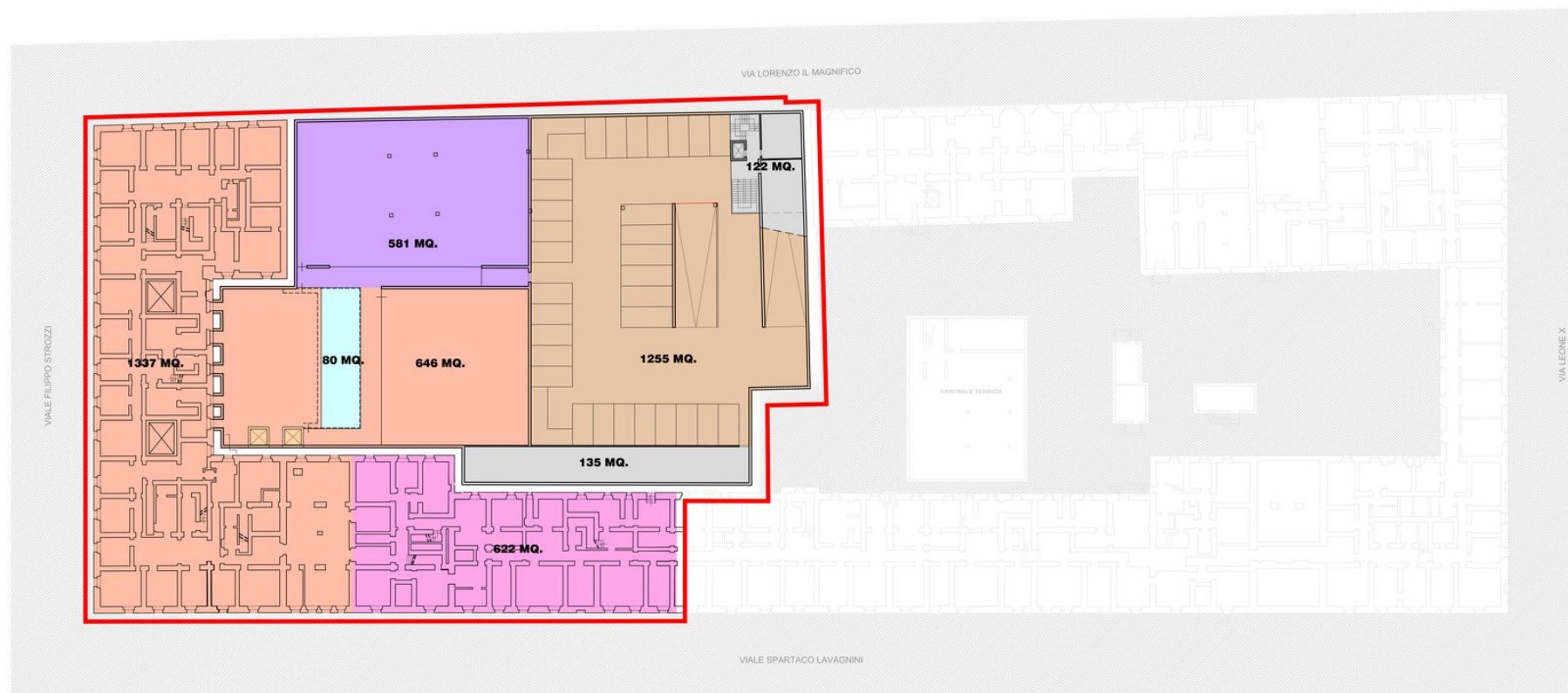


PROGETTO DI MASSIMA DELLE FUNZIONI
-2 Piano Interrato



LEGENDA

 ALBERGO con retail	8095 MQ.	 COLLEGAMENTI / SPAZI TECNICI	2522 MQ.
 COMMERCIALE media struttura	1969 MQ.	 PARCHEGGI	5836 MQ.
 COMMERCIALE del vicinato	1161 MQ.	 TERRAZZE	436 MQ.
 RESIDENZIALE	1381 MQ.	 PISCINA	173 MQ.
 DIREZIONALE	3943 MQ.		
 RESEDE CONDOMINIALE	1815 MQ.	TOTALE SUPERFICIE	27331 MQ.
 LOTTO			

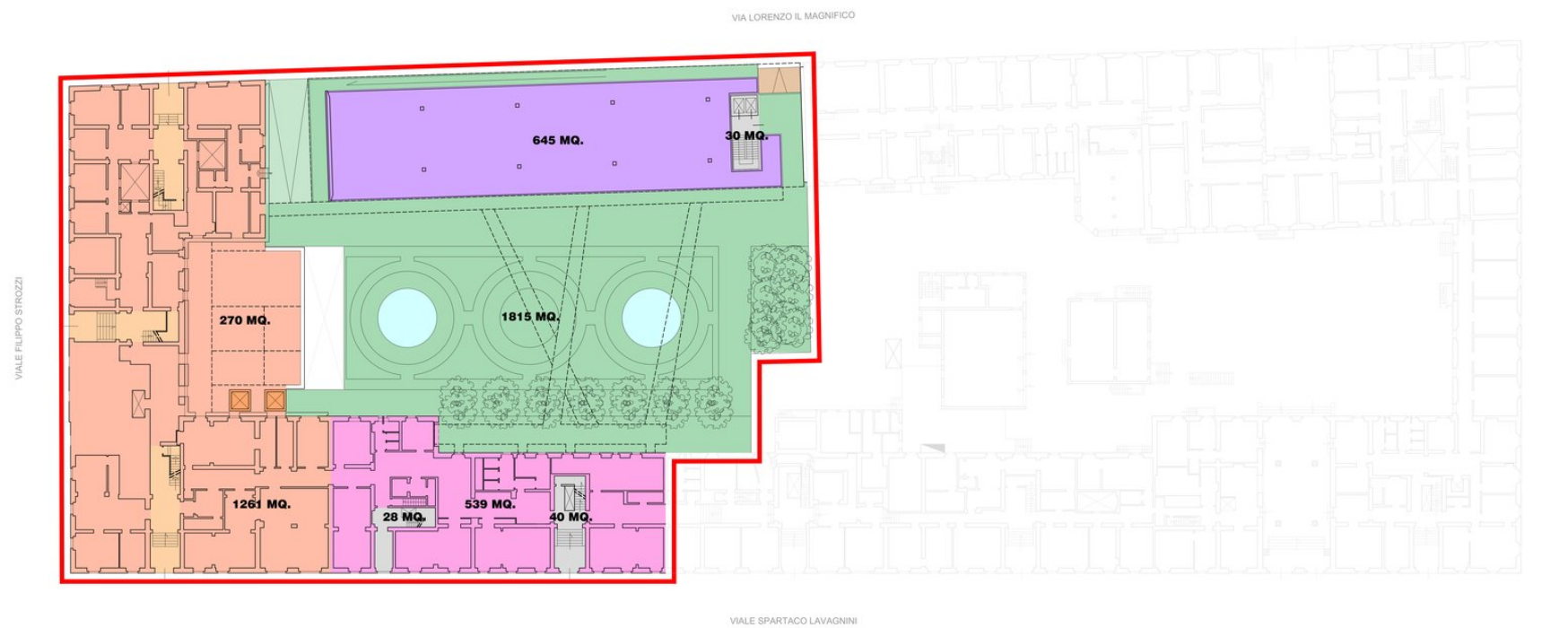


PROGETTO DI MASSIMA DELLE FUNZIONI

-1 Piano Interrato

LEGENDA

 ALBERGO con retail	8095 MQ.	 COLLEGAMENTI / SPAZI TECNICI	2522 MQ.
 COMMERCIALE media struttura	1969 MQ.	 PARCHEGGI	5836 MQ.
 COMMERCIALE del vicinato	1161 MQ.	 TERRAZZE	436 MQ.
 RESIDENZIALE	1381 MQ.	 PISCINA	173 MQ.
 DIREZIONALE	3943 MQ.		
 RESEDE CONDOMINIALE	1815 MQ.	TOTALE SUPERFICIE	27331 MQ.
 LOTTO			



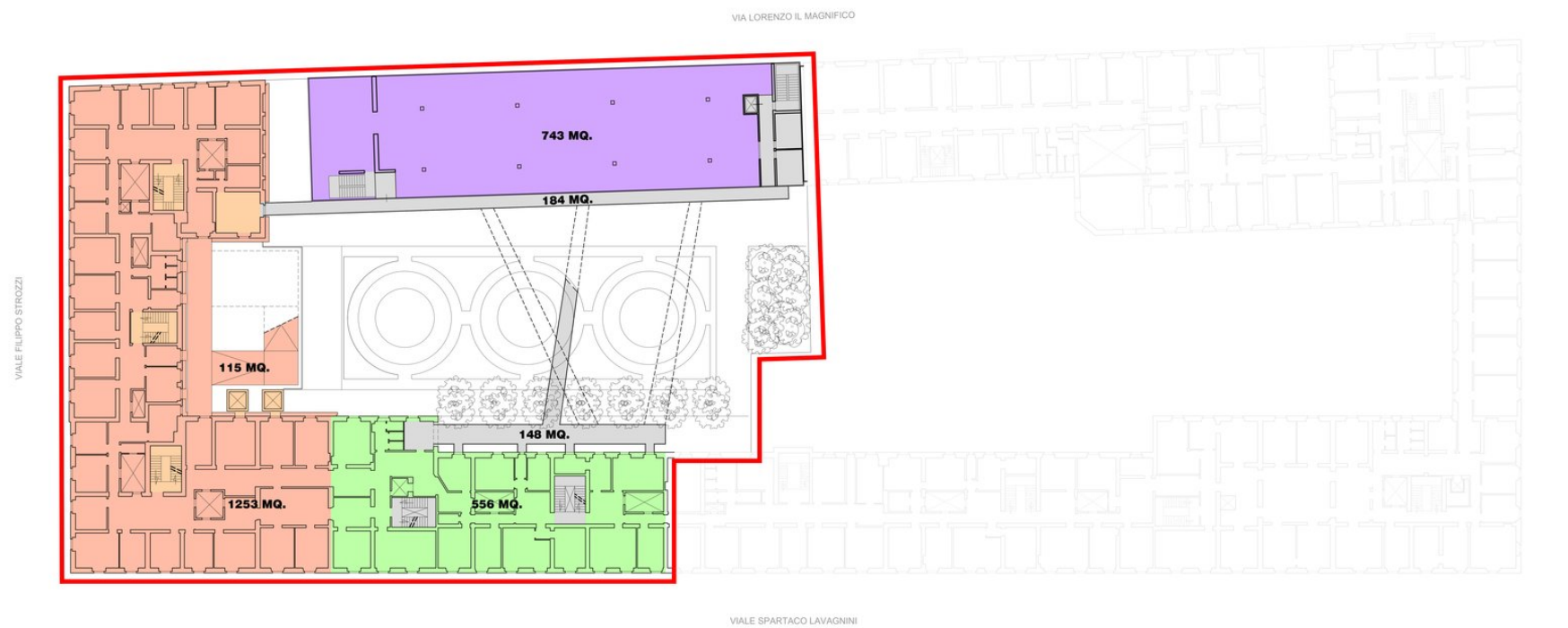
PROGETTO DI MASSIMA DELLE FUNZIONI

0 Piano Terra



LEGENDA

ALBERGO con retail	8095 MQ.	COLLEGAMENTI / SPAZI TECNICI	2522 MQ.
COMMERCIALE media struttura	1969 MQ.	PARCHEGGI	5836 MQ.
COMMERCIALE del vicinato	1161 MQ.	TERRAZZE	436 MQ.
RESIDENZIALE	1381 MQ.	PISCINA	173 MQ.
DIREZIONALE	3943 MQ.	TOTALE SUPERFICIE	27331 MQ.
RESEDE CONDOMINIALE	1815 MQ.		
LOTTO			

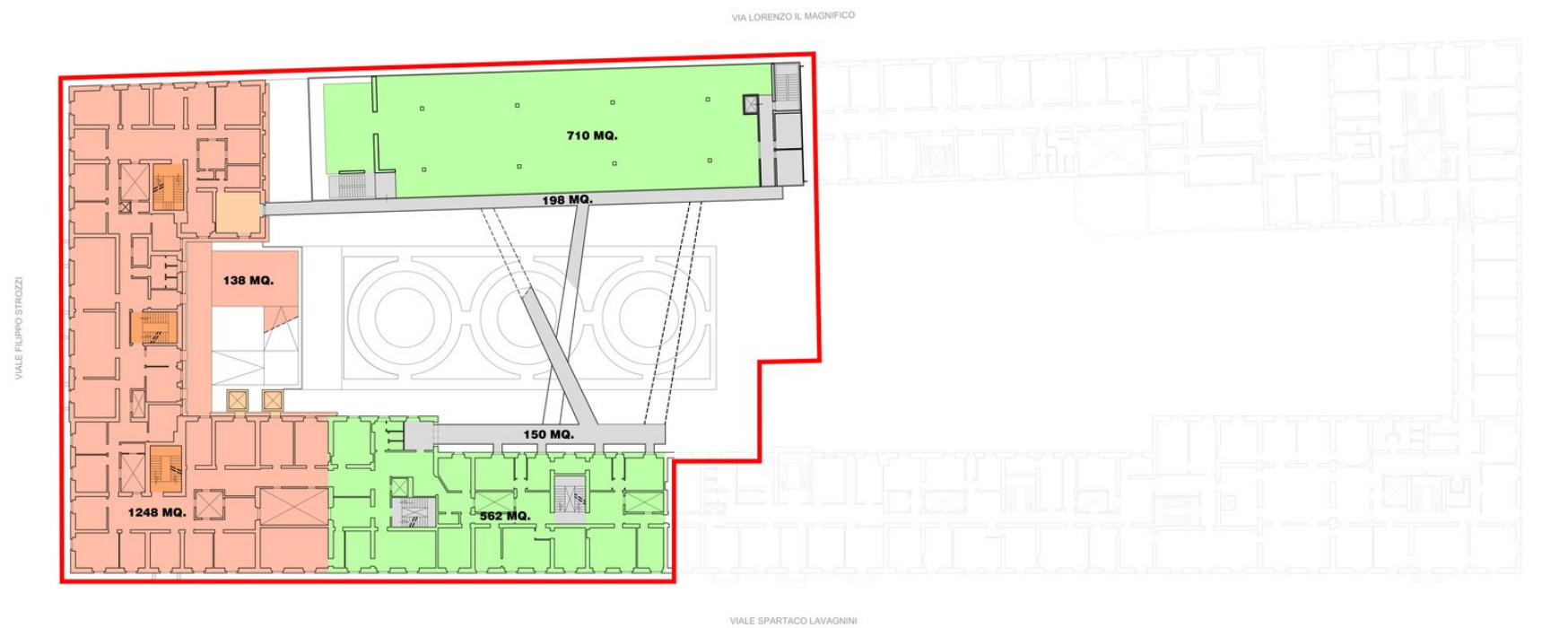


PROGETTO DI MASSIMA DELLE FUNZIONI

+1 Piano Primo

LEGENDA

 ALBERGO con retail	8095 MQ.	 COLLEGAMENTI / SPAZI TECNICI	2522 MQ.
 COMMERCIALE media struttura	1969 MQ.	 PARCHEGGI	5836 MQ.
 COMMERCIALE del vicinato	1161 MQ.	 TERRAZZE	436 MQ.
 RESIDENZIALE	1381 MQ.	 PISCINA	173 MQ.
 DIREZIONALE	3943 MQ.	TOTALE SUPERFICIE 27331 MQ.	
 RESEDE CONDOMINIALE	1815 MQ.		
 LOTTO			



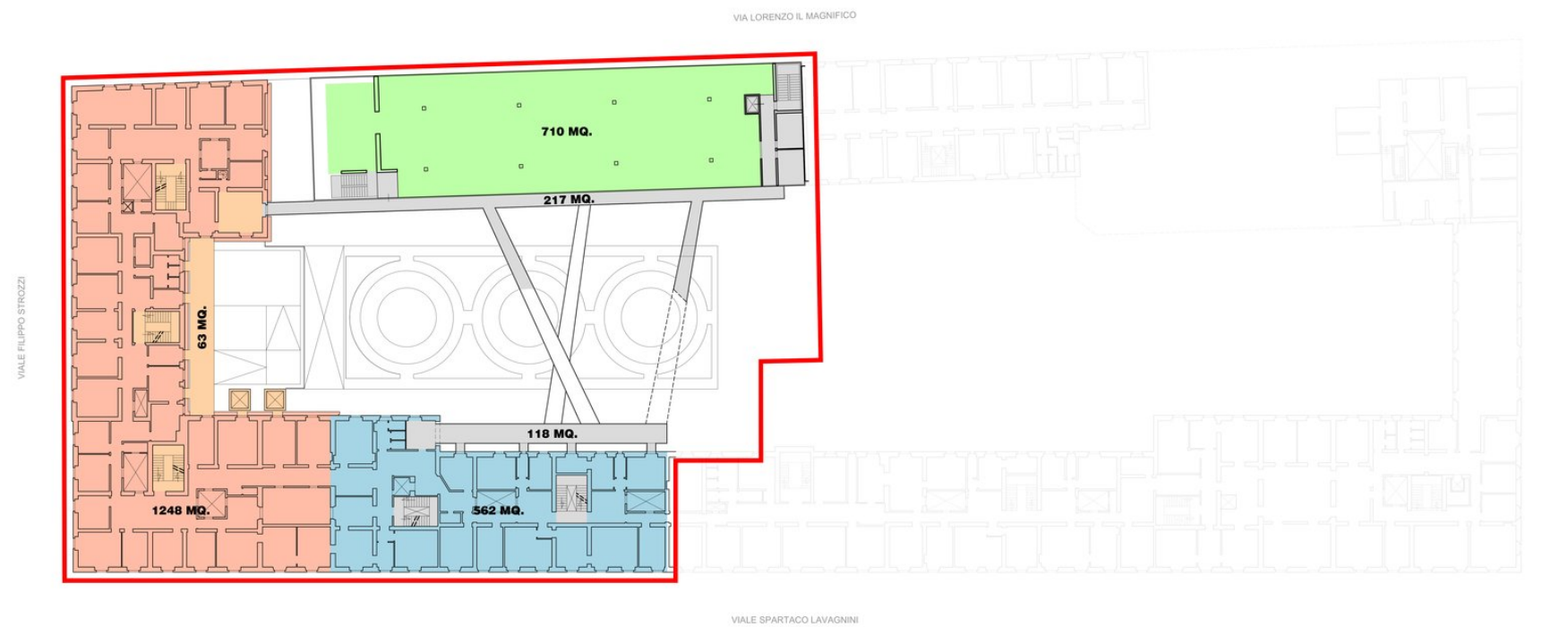
PROGETTO DI MASSIMA DELLE FUNZIONI

+2 Piano Secondo

LEGENDA

ALBERGO con retail	8095 MQ.	COLLEGAMENTI / SPAZI TECNICI	2522 MQ.
COMMERCIALE media struttura	1969 MQ.	PARCHEGGI	5836 MQ.
COMMERCIALE del vicinato	1161 MQ.	TERRAZZE	436 MQ.
RESIDENZIALE	1381 MQ.	PISCINA	173 MQ.
DIREZIONALE	3943 MQ.	TOTALE SUPERFICIE	27331 MQ.
RESEDE CONDOMINIALE	1815 MQ.		

LOTTO



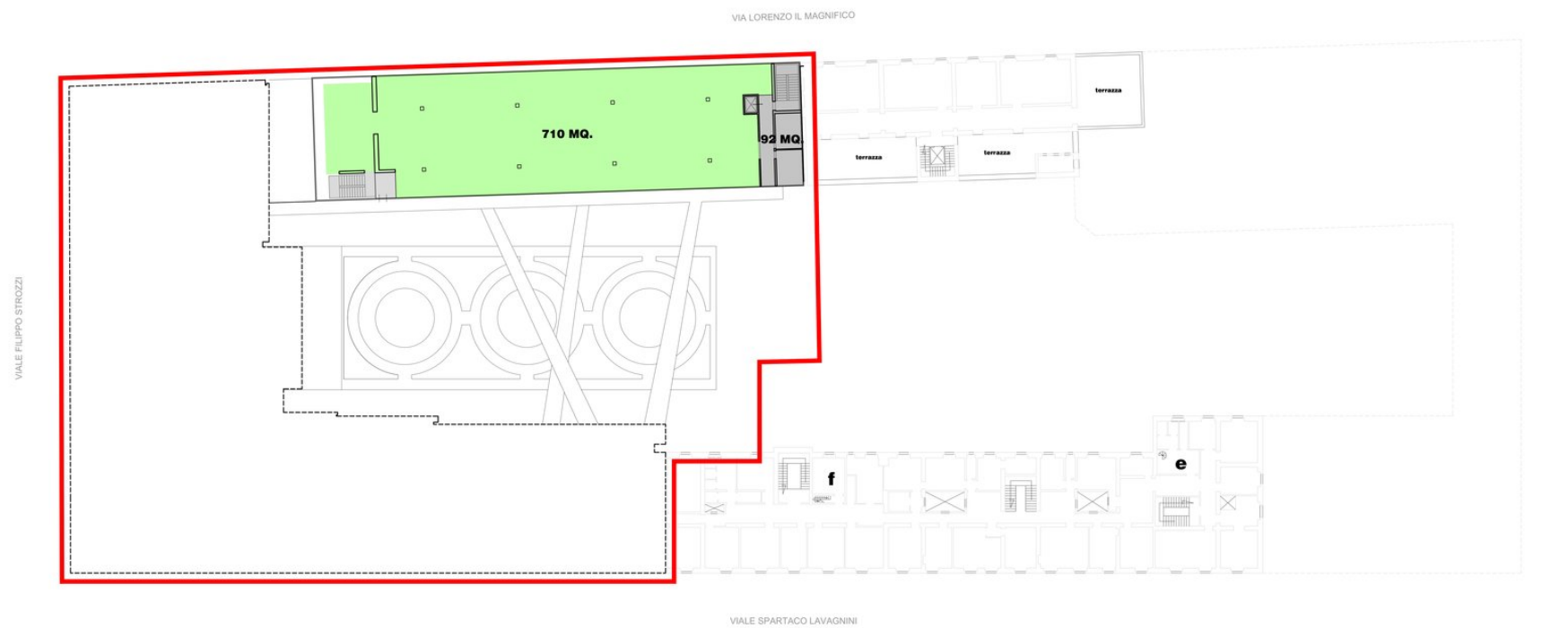
PROGETTO DI MASSIMA DELLE FUNZIONI

+3 Piano Terzo



LEGENDA

ALBERGO con retail	8095 MQ.	COLLEGAMENTI / SPAZI TECNICI	2522 MQ.
COMMERCIALE media struttura	1969 MQ.	PARCHEGGI	5836 MQ.
COMMERCIALE del vicinato	1161 MQ.	TERRAZZE	436 MQ.
RESIDENZIALE	1381 MQ.	PISCINA	173 MQ.
DIREZIONALE	3943 MQ.	TOTALE SUPERFICIE	27331 MQ.
RESEDE CONDOMINIALE	1815 MQ.		
LOTTO			



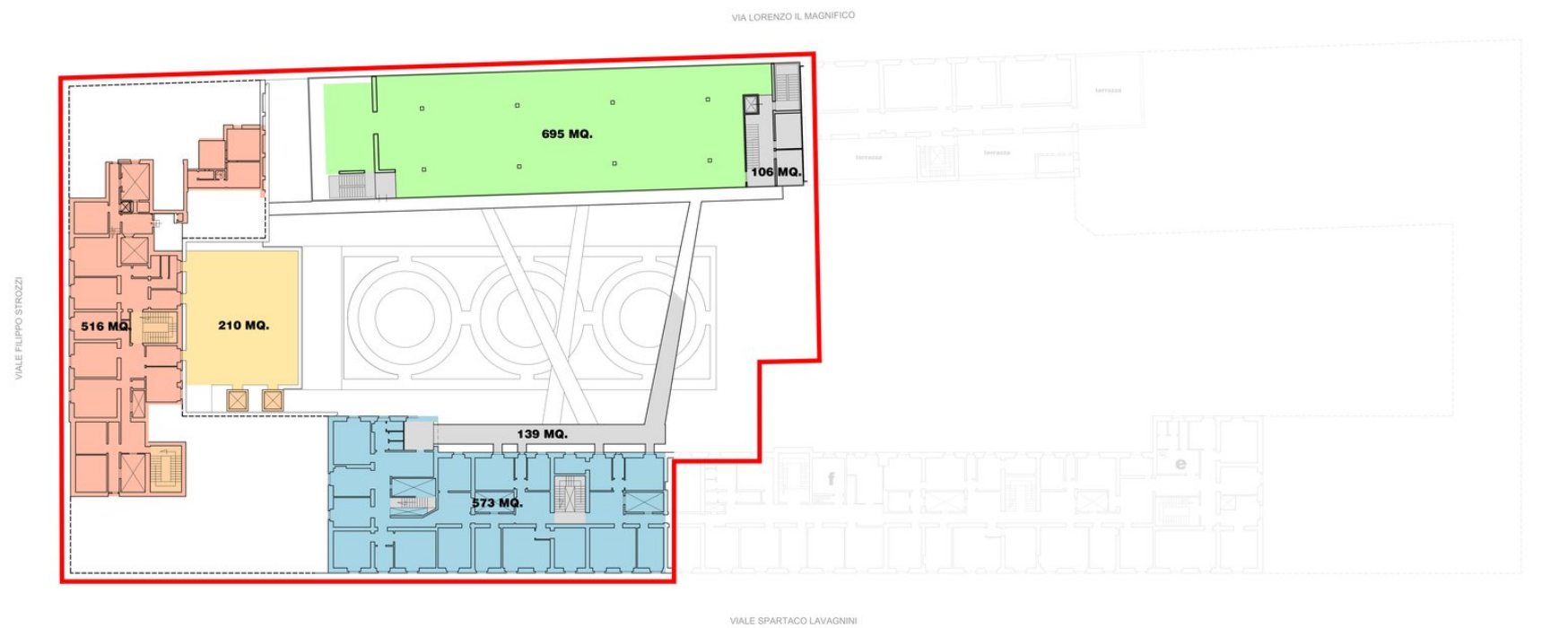
PROGETTO DI MASSIMA DELLE FUNZIONI

+4 Piano Quarto



LEGENDA

ALBERGO con retail	8095 MQ.	COLLEGAMENTI / SPAZI TECNICI	2522 MQ.
COMMERCIALE media struttura	1969 MQ.	PARCHEGGI	5836 MQ.
COMMERCIALE del vicinato	1161 MQ.	TERRAZZE	436 MQ.
RESIDENZIALE	1381 MQ.	PISCINA	173 MQ.
DIREZIONALE	3943 MQ.	TOTALE SUPERFICIE	27331 MQ.
RESEDE CONDOMINIALE	1815 MQ.		
LOTTO			



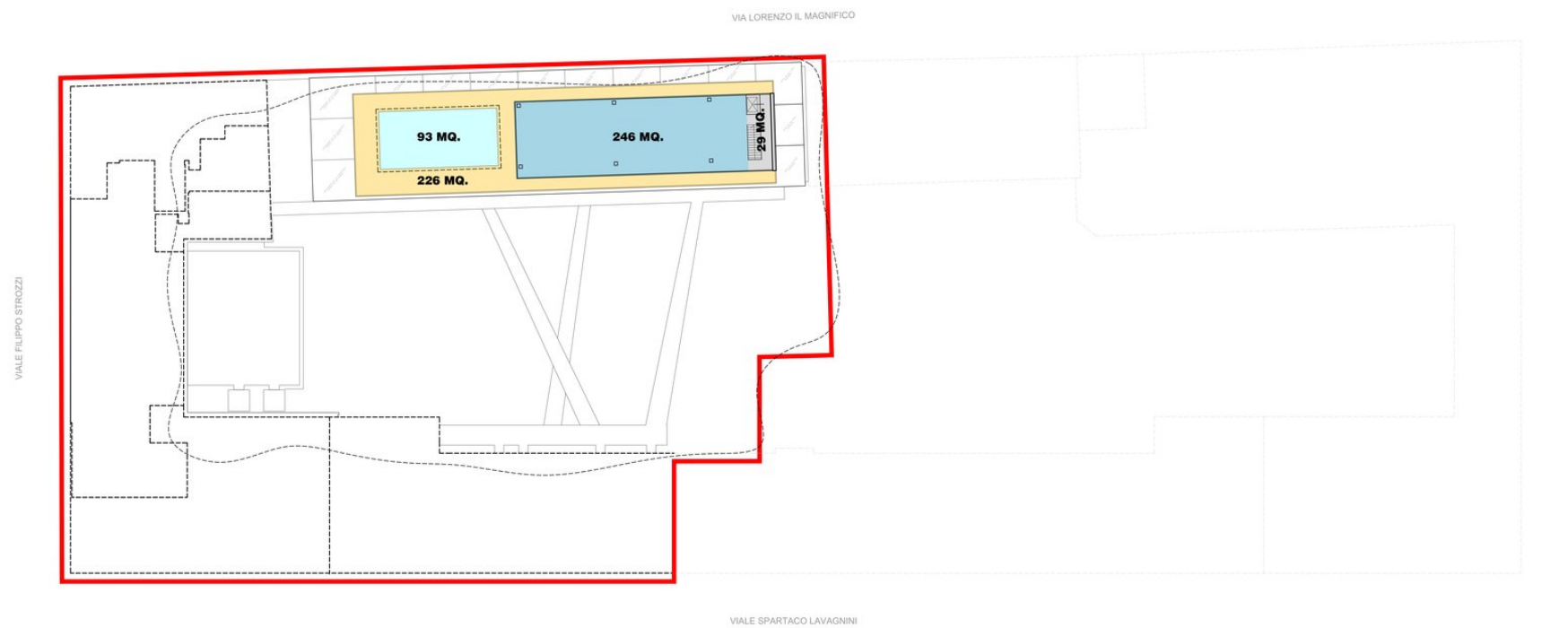
PROGETTO DI MASSIMA DELLE FUNZIONI

+5 Piano Quinto



LEGENDA

ALBERGO con retail	8095 MQ.	COLLEGAMENTI / SPAZI TECNICI	2522 MQ.
COMMERCIALE media struttura	1969 MQ.	PARCHEGGI	5836 MQ.
COMMERCIALE del vicinato	1161 MQ.	TERRAZZE	436 MQ.
RESIDENZIALE	1381 MQ.	PISCINA	173 MQ.
DIREZIONALE	3943 MQ.	TOTALE SUPERFICIE	27331 MQ.
RESEDE CONDOMINIALE	1815 MQ.		
LOTTO			



PROGETTO DI MASSIMA DELLE FUNZIONI

+6 Piano Sesto



WWW.PATRICKSTAPPERS.COM